



[Go to Product page](#)

Datasheet for ABIN6242428
anti-LRRC1 antibody (AA 298-330)

1 Image

Overview

Quantity:	50 µL
Target:	LRRC1
Binding Specificity:	AA 298-330
Reactivity:	Human
Host:	Rabbit
Clonality:	Polyclonal
Conjugate:	This LRRC1 antibody is un-conjugated
Application:	Western Blotting (WB)

Product Details

Immunogen:	This LRRC1 antibody is generated from a rabbit immunized with a KLH conjugated synthetic peptide between 298-330 amino acids from the Central region of human LRRC1.
Clone:	RB30744
Isotype:	Ig Fraction
Purification:	This antibody is purified through a protein A column, followed by peptide affinity purification.

Target Details

Target:	LRRC1
Alternative Name:	LRRC1 (LRRC1 Products)
Molecular Weight:	59242

Target Details

UniProt: [Q9BTT6](#)

Application Details

Application Notes: WB: 1:2000

Restrictions: For Research Use only

Handling

Format: Liquid

Buffer: Purified polyclonal antibody supplied in PBS with 0.09 % (W/V) sodium azide.

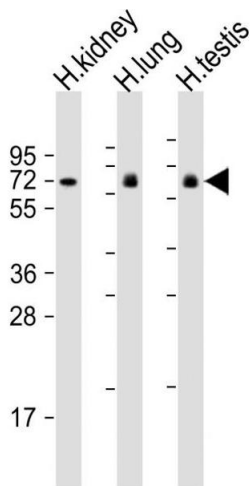
Preservative: Sodium azide

Precaution of Use: This product contains Sodium azide: a POISONOUS AND HAZARDOUS SUBSTANCE which should be handled by trained staff only.

Storage: 4 °C,-20 °C

Expiry Date: 6 months

Images



Western Blotting

Image 1. All lanes : Anti-LRRC1 Antibody (Center) at 1:2000 dilution Lane 1: human kidney lysate Lane 2: human lung lysate Lane 3: human testis lysate Lysates/proteins at 20 µg per lane. Secondary Goat Anti-Rabbit IgG, (H+L), Peroxidase conjugated at 1/10000 dilution. Predicted band size : 59 kDa Blocking/Dilution buffer: 5 % NFDN/TBST.