



[Go to Product page](#)

Datasheet for ABIN6242445
anti-MPL antibody (AA 514-546)

1 Image

Overview

Quantity:	200 µL
Target:	MPL
Binding Specificity:	AA 514-546
Reactivity:	Mouse
Host:	Rabbit
Clonality:	Polyclonal
Conjugate:	This MPL antibody is un-conjugated
Application:	Western Blotting (WB)

Product Details

Immunogen:	This MPL antibody is generated from a rabbit immunized with a KLH conjugated synthetic peptide between 514-546 amino acids from the human region of human MPL.
Clone:	RB57635
Isotype:	Ig Fraction
Predicted Reactivity:	H
Purification:	This antibody is purified through a protein A column, followed by peptide affinity purification.

Target Details

Target:	MPL
Alternative Name:	MPL (MPL Products)

Target Details

Background:	Receptor for thrombopoietin. May represent a regulatory molecule specific for TPO-R-dependent immune responses.
Molecular Weight:	71245
UniProt:	P40238
Pathways:	JAK-STAT Signaling

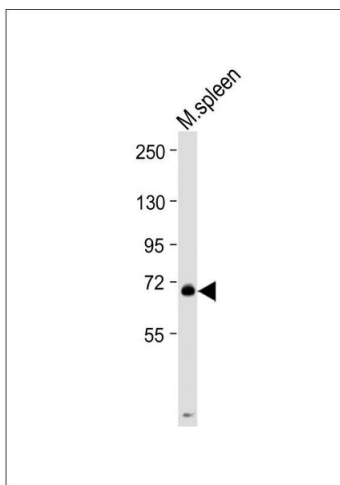
Application Details

Application Notes:	WB: 1:2000
Restrictions:	For Research Use only

Handling

Format:	Liquid
Buffer:	Purified polyclonal antibody supplied in PBS with 0.09 % (W/V) sodium azide.
Preservative:	Sodium azide
Precaution of Use:	This product contains Sodium azide: a POISONOUS AND HAZARDOUS SUBSTANCE which should be handled by trained staff only.
Storage:	4 °C,-20 °C
Expiry Date:	6 months

Images



Western Blotting

Image 1. Anti-L Antibody (C-Term) at 1:2000 dilution + Mouse spleen lysate Lysates/proteins at 20 µg per lane. Secondary Goat Anti-Rabbit IgG, (H+L), Peroxidase conjugated at 1/10000 dilution. Predicted band size : 70 kDa
Blocking/Dilution buffer: 5 % NFDM/TBST.