

Datasheet for ABIN6242464

anti-Neurotrophin 3 antibody (AA 89-120)[Go to Product page](#)**1** Image

Overview

Quantity:	400 µL
Target:	Neurotrophin 3 (NTF3)
Binding Specificity:	AA 89-120
Reactivity:	Human, Mouse, Rat
Host:	Rabbit
Clonality:	Polyclonal
Conjugate:	This Neurotrophin 3 antibody is un-conjugated
Application:	Western Blotting (WB)

Product Details

Immunogen:	This NTF3 antibody is generated from a rabbit immunized with a KLH conjugated synthetic peptide between 89-120 amino acids from the Central region of human NTF3.
Clone:	RB51226
Isotype:	Ig Fraction
Purification:	This antibody is purified through a protein A column, followed by peptide affinity purification.

Target Details

Target:	Neurotrophin 3 (NTF3)
Alternative Name:	NTF3 (NTF3 Products)
Background:	Seems to promote the survival of visceral and proprioceptive sensory neurons.

Target Details

Molecular Weight:	29355
UniProt:	P20783
Pathways:	RTK Signaling , Neurotrophin Signaling Pathway

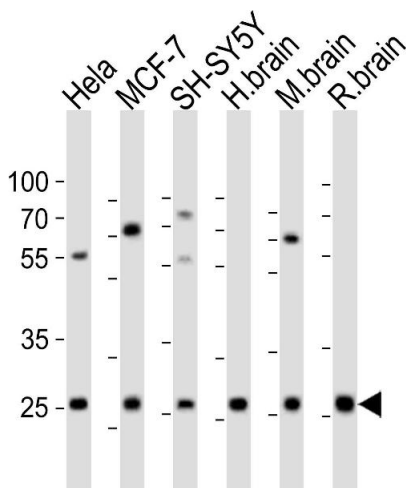
Application Details

Application Notes:	WB: 1:1000
Restrictions:	For Research Use only

Handling

Format:	Liquid
Buffer:	Purified polyclonal antibody supplied in PBS with 0.09 % (W/V) sodium azide.
Preservative:	Sodium azide
Precaution of Use:	This product contains Sodium azide: a POISONOUS AND HAZARDOUS SUBSTANCE which should be handled by trained staff only.
Storage:	4 °C,-20 °C
Expiry Date:	6 months

Images



Western Blotting

Image 1. Western blot analysis of lysates from HeLa, MCF-7, SH-SY5Y cell line, human brain, mouse brain, rat brain tissue (from left to right), using NTF3 Antibody (Center) (ABIN6242464 and ABIN6577625). (ABIN6242464 and ABIN6577625) was diluted at 1:1000 at each lane. A goat anti-rabbit IgG H&L(HRP) at 1:10000 dilution was used as the secondary antibody. Lysates at 20 µg per lane.