

Datasheet for ABIN6242503  
**anti-OLIG1 antibody (AA 161-194)**[Go to Product page](#)

## 1 Image

## Overview

Quantity:	400 µL
Target:	OLIG1
Binding Specificity:	AA 161-194
Reactivity:	Mouse
Host:	Rabbit
Clonality:	Polyclonal
Conjugate:	This OLIG1 antibody is un-conjugated
Application:	Western Blotting (WB)

## Product Details

Immunogen:	This Mouse Olig1 antibody is generated from a rabbit immunized with a KLH conjugated synthetic peptide between 161-194 amino acids from the Central region of mouse Olig1.
Clone:	RB51496
Isotype:	Ig Fraction
Predicted Reactivity:	Rat
Purification:	This antibody is purified through a protein A column, followed by peptide affinity purification.

## Target Details

Target:	OLIG1
Alternative Name:	Olig1 ( <a href="#">OLIG1 Products</a> )

## Target Details

Background:	Promotes formation and maturation of oligodendrocytes, especially within the brain. Cooperates with OLIG2 to establish the pMN domain of the embryonic neural tube.
Molecular Weight:	27141
UniProt:	<a href="#">Q9JKN5</a>

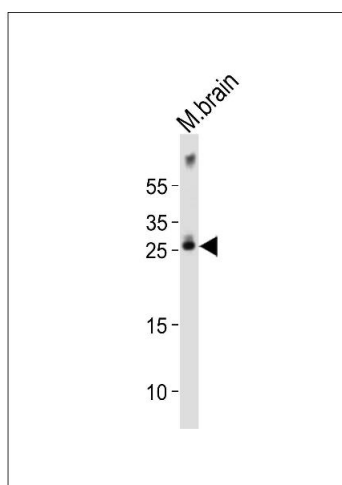
## Application Details

Application Notes:	WB: 1:1000
Restrictions:	For Research Use only

## Handling

Format:	Liquid
Buffer:	Purified polyclonal antibody supplied in PBS with 0.09 % (W/V) sodium azide.
Preservative:	Sodium azide
Precaution of Use:	This product contains Sodium azide: a POISONOUS AND HAZARDOUS SUBSTANCE which should be handled by trained staff only.
Storage:	4 °C,-20 °C
Expiry Date:	6 months

## Images



### Western Blotting

**Image 1.** Western blot analysis of lysate from mouse brain tissue lysate, using Olig1 Antibody (Center) (ABIN6242503 and ABIN6577777). (ABIN6242503 and ABIN6577777) was diluted at 1:1000. A goat anti-rabbit IgG H&L(HRP) at 1:10000 dilution was used as the secondary antibody. Lysate at 20 µg.