

Datasheet for ABIN6242515
anti-RSL1D1 antibody (AA 455-485)



[Go to Product page](#)

1 Image

Overview

Quantity:	200 µL
Target:	RSL1D1
Binding Specificity:	AA 455-485
Reactivity:	Human
Host:	Rabbit
Clonality:	Polyclonal
Conjugate:	This RSL1D1 antibody is un-conjugated
Application:	Western Blotting (WB)

Product Details

Immunogen:	This RSL1D1 antibody is generated from a rabbit immunized with a KLH conjugated synthetic peptide between 455-485 amino acids from human RSL1D1.
Clone:	RB54867
Isotype:	Ig Fraction
Purification:	This antibody is purified through a protein A column, followed by peptide affinity purification.

Target Details

Target:	RSL1D1
Alternative Name:	RSL1D1 (RSL1D1 Products)
Background:	Regulates cellular senescence through inhibition of PTEN translation. Acts as a pro-apoptotic

Target Details

regulator in response to DNA damage.

Molecular Weight: 54973

UniProt: [O76021](#)

Application Details

Application Notes: WB: 1:2000

Restrictions: For Research Use only

Handling

Format: Liquid

Buffer: Purified polyclonal antibody supplied in PBS with 0.09 % (W/V) sodium azide.

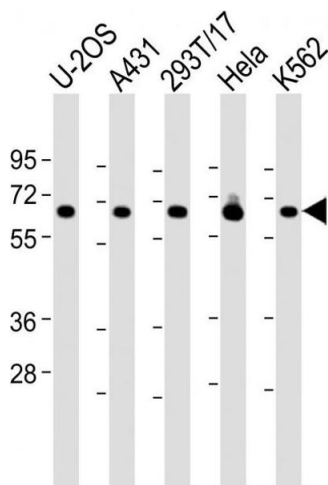
Preservative: Sodium azide

Precaution of Use: This product contains Sodium azide: a POISONOUS AND HAZARDOUS SUBSTANCE which should be handled by trained staff only.

Storage: 4 °C,-20 °C

Expiry Date: 6 months

Images



Western Blotting

Image 1. All lanes : Anti-RSL1D1 Antibody (C-Term) at 1:2000 dilution Lane 1: U-2OS whole cell lysate Lane 2: A431 whole cell lysate Lane 3: 293T/17 whole cell lysate Lane 4: HeLa whole cell lysate Lane 5: K562 whole cell lysate Lysates/proteins at 20 µg per lane. Secondary Goat Anti-Rabbit IgG, (H+L), Peroxidase conjugated at 1/10000 dilution. Predicted band size : 55 kDa Blocking/Dilution buffer: 5 % NFDM/TBST.