

Datasheet for ABIN6242538
anti-PRODH antibody (AA 429-461)[Go to Product page](#)

1 Image

Overview

Quantity:	200 µL
Target:	PRODH
Binding Specificity:	AA 429-461
Reactivity:	Mouse
Host:	Rabbit
Clonality:	Polyclonal
Conjugate:	This PRODH antibody is un-conjugated
Application:	Western Blotting (WB)

Product Details

Immunogen:	This PRODH antibody is generated from a rabbit immunized with a KLH conjugated synthetic peptide between 429-461 amino acids from human PRODH.
Clone:	RB54647
Isotype:	IgG
Predicted Reactivity:	H
Purification:	This antibody is purified through a protein A column, followed by peptide affinity purification.

Target Details

Target:	PRODH
Alternative Name:	PRODH (PRODH Products)

Target Details

Background:	Converts proline to delta-1-pyrroline-5-carboxylate.
UniProt:	O43272 , F6PYI8
Pathways:	Response to Water Deprivation , Monocarboxylic Acid Catabolic Process

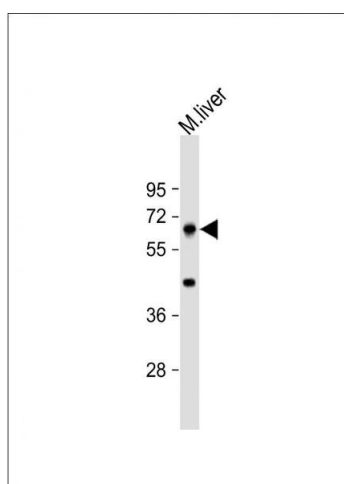
Application Details

Application Notes:	WB: 1:4000
Restrictions:	For Research Use only

Handling

Format:	Liquid
Buffer:	Purified polyclonal antibody supplied in PBS with 0.09 % (W/V) sodium azide.
Preservative:	Sodium azide
Precaution of Use:	This product contains Sodium azide: a POISONOUS AND HAZARDOUS SUBSTANCE which should be handled by trained staff only.
Storage:	4 °C,-20 °C
Expiry Date:	6 months

Images



Western Blotting

Image 1. Anti-PRODH Antibody (C-Term) at 1:4000 dilution + mouse liver lysate Lysates/proteins at 20 µg per lane. Secondary Goat Anti-Rabbit IgG, (H+L), Peroxidase conjugated at 1/10000 dilution. Predicted band size : 68 kDa Blocking/Dilution buffer: 5 % NFDm/TBST.