

Datasheet for ABIN6242560
anti-STAT5A antibody (C-Term)



[Go to Product page](#)

2 Images

Overview

Quantity:	400 µL
Target:	STAT5A
Binding Specificity:	AA 730-765, C-Term
Reactivity:	Human
Host:	Rabbit
Clonality:	Polyclonal
Conjugate:	This STAT5A antibody is un-conjugated
Application:	Western Blotting (WB), Immunofluorescence (IF)

Product Details

Immunogen:	This STAT5A antibody is generated from a rabbit immunized with a KLH conjugated synthetic peptide between 730-765 amino acids from the C-terminal region of human STAT5A.
Clone:	RB51472
Isotype:	Ig Fraction
Purification:	This antibody is purified through a protein A column, followed by peptide affinity purification.

Target Details

Target:	STAT5A
Alternative Name:	STAT5A (STAT5A Products)
Background:	Carries out a dual function: signal transduction and activation of transcription. Mediates cellular

Target Details

responses to the cytokine KITLG/SCF and other growth factors. Mediates cellular responses to ERBB4. May mediate cellular responses to activated FGFR1, FGFR2, FGFR3 and FGFR4. Binds to the GAS element and activates PRL-induced transcription. Regulates the expression of milk proteins during lactation.

Molecular Weight: 90647

UniProt: [P42229](#)

Pathways: [JAK-STAT Signaling](#), [RTK Signaling](#), [Response to Growth Hormone Stimulus](#), [C21-Steroid Hormone Metabolic Process](#), [Regulation of Leukocyte Mediated Immunity](#), [Positive Regulation of Immune Effector Process](#), [CXCR4-mediated Signaling Events](#), [Activated T Cell Proliferation](#)

Application Details

Application Notes: IF: 1:25. WB: 1:1000

Restrictions: For Research Use only

Handling

Format: Liquid

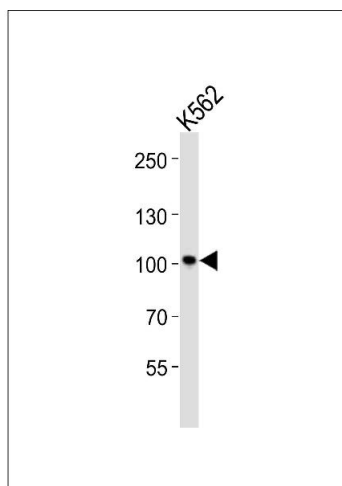
Buffer: Purified polyclonal antibody supplied in PBS with 0.09 % (W/V) sodium azide.

Preservative: Sodium azide

Precaution of Use: This product contains Sodium azide: a POISONOUS AND HAZARDOUS SUBSTANCE which should be handled by trained staff only.

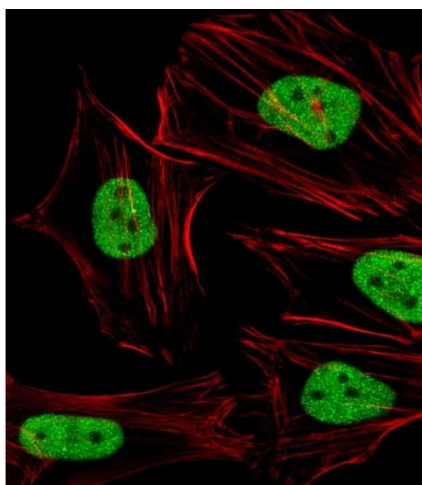
Storage: 4 °C,-20 °C

Expiry Date: 6 months



Western Blotting

Image 1. Western blot analysis of lysate from K562 cell line, using STAT5A Antibody (C-term) (ABIN6242560 and ABIN6577750). (ABIN6242560 and ABIN6577750) was diluted at 1:1000. A goat anti-rabbit IgG H&L(HRP) at 1:10000 dilution was used as the secondary antibody. Lysate at 20 µg.



Immunofluorescence

Image 2. Immunofluorescent analysis of 4 % paraformaldehyde-fixed, 0.1 % Triton X-100 permeabilized HeLa (Human Cervical epithelial adenocarcinoma cell line) cells labeling STAT5A with (ABIN6242560 and ABIN6577750) at 1/25 dilution, followed by Alexa Fluor 488-conjugated goat anti-rabbit IgG (1583138) secondary antibody at 1/400 dilution (green). Confocal image showing nuclear staining on HeLa cell line. Cytoplasmic actin is detected with Alexa Fluor® 555 conjugated with Phalloidin (OB16636430) at 1/100 dilution (red).