

Datasheet for ABIN6242565

anti-Phosphoglucomutase 1 antibody (AA 469-501)

5 Images

[Go to Product page](#)

Overview

Quantity:	400 µL
Target:	Phosphoglucomutase 1 (PGM1)
Binding Specificity:	AA 469-501
Reactivity:	Human, Mouse
Host:	Rabbit
Clonality:	Polyclonal
Conjugate:	This Phosphoglucomutase 1 antibody is un-conjugated
Application:	Western Blotting (WB), Immunohistochemistry (Paraffin-embedded Sections) (IHC (p))

Product Details

Immunogen:	This PGM1 antibody is generated from a rabbit immunized with a KLH conjugated synthetic peptide between 469-501 amino acids from human PGM1.
Clone:	RB53795
Isotype:	Ig Fraction
Purification:	This antibody is purified through a protein A column, followed by peptide affinity purification.

Target Details

Target:	Phosphoglucomutase 1 (PGM1)
Alternative Name:	PGM1 (PGM1 Products)
Background:	This enzyme participates in both the breakdown and synthesis of glucose.

Target Details

Molecular Weight:	61449
UniProt:	P36871
Pathways:	Cellular Glucan Metabolic Process

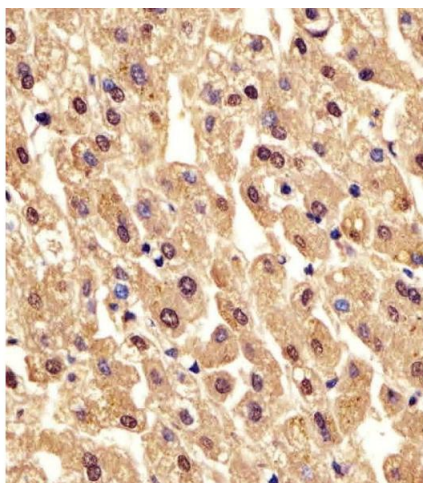
Application Details

Application Notes:	WB: 1:2000. WB: 1:2000. WB: 1:2000. IHC-P: 1:25. IHC-P: 1:25
Restrictions:	For Research Use only

Handling

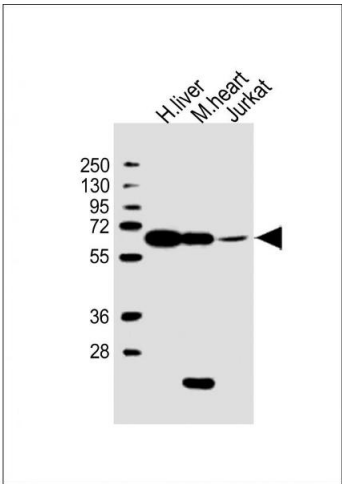
Format:	Liquid
Buffer:	Purified polyclonal antibody supplied in PBS with 0.09 % (W/V) sodium azide.
Preservative:	Sodium azide
Precaution of Use:	This product contains Sodium azide: a POISONOUS AND HAZARDOUS SUBSTANCE which should be handled by trained staff only.
Storage:	4 °C,-20 °C
Expiry Date:	6 months

Images



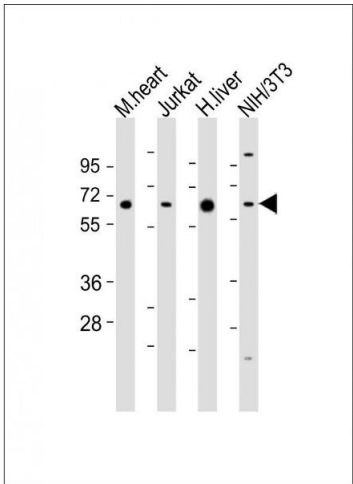
Immunohistochemistry (Paraffin-embedded Sections)

Image 1. (ABIN6242565 and ABIN6578213) staining PGM1 in human liver tissue sections by Immunohistochemistry (IHC-P - paraformaldehyde-fixed, paraffin-embedded sections). Tissue was fixed with formaldehyde and blocked with 3 % BSA for 0.5 hour at room temperature, antigen retrieval was by heat mediation with a citrate buffer (pH 6). Samples were incubated with primary antibody (1/25) for 1 hour at 37 °C. A undiluted biotinylated goat polyvalent antibody was used as the secondary antibody.



Western Blotting

Image 2. All lanes : Anti-PGM1 Antibody (C-Term) at 1:2000 dilution Lane 1: human liver lysate Lane 2: mouse heart lysate Lane 3: Jurkat whole cell lysate Lysates/proteins at 20 µg per lane. Secondary Goat Anti-Rabbit IgG, (H+L), Peroxidase conjugated at 1/10000 dilution. Predicted band size : 61 kDa Blocking/Dilution buffer: 5 % NFDm/TBST.



Western Blotting

Image 3. All lanes : Anti-PGM1 Antibody (C-Term) at 1:2000 dilution Lane 1: mouse heart lysates Lane 2: Jurkat whole cell lysates Lane 3: human liver lysates Lane 4: NIH/3T3 whole cell lysates Lysates/proteins at 20 µg per lane. Secondary Goat Anti-Rabbit IgG, (H+L), Peroxidase conjugated at 1/10000 dilution Predicted band size : 61 kDa Blocking/Dilution buffer: 5 % NFDm/TBST.

Please check the [product details page](#) for more images. Overall 5 images are available for ABIN6242565.