

Datasheet for ABIN6242570

**anti-PDGFD antibody**[Go to Product page](#)**1** Image

## Overview

Quantity:	400 µL
Target:	PDGFD
Reactivity:	Mouse
Host:	Rabbit
Clonality:	Polyclonal
Conjugate:	This PDGFD antibody is un-conjugated
Application:	Western Blotting (WB)

## Product Details

Immunogen:	This PDGFD antibody is generated from a rabbit immunized with a recombinant protein of human PDGFD.
Clone:	RB52125
Isotype:	Ig Fraction
Purification:	This antibody is purified through a protein A column, followed by peptide affinity purification.

## Target Details

Target:	PDGFD
Alternative Name:	PDGFD ( <a href="#">PDGFD Products</a> )
Background:	Growth factor that plays an essential role in the regulation of embryonic development, cell proliferation, cell migration, survival and chemotaxis. Potent mitogen for cells of mesenchymal origin. Plays an important role in wound healing. Induces macrophage recruitment, increased

## Target Details

interstitial pressure, and blood vessel maturation during angiogenesis. Can initiate events that lead to a mesangial proliferative glomerulonephritis, including influx of monocytes and macrophages and production of extracellular matrix (By similarity).

Molecular Weight: 42848

UniProt: [Q9GZP0](#)

Pathways: [RTK Signaling, Platelet-derived growth Factor Receptor Signaling](#)

## Application Details

Application Notes: WB: 1:1000

Restrictions: For Research Use only

## Handling

Format: Liquid

Buffer: Purified polyclonal antibody supplied in PBS with 0.09 % (W/V) sodium azide.

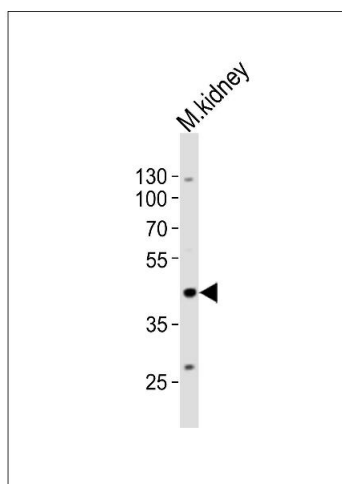
Preservative: Sodium azide

Precaution of Use: This product contains Sodium azide: a POISONOUS AND HAZARDOUS SUBSTANCE which should be handled by trained staff only.

Storage: 4 °C,-20 °C

Expiry Date: 6 months

## Images



### Western Blotting

**Image 1.** Western blot analysis of lysate from mouse kidney tissue lysate, using PDGFD Antibody (ABIN6242570 and ABIN6577905). (ABIN6242570 and ABIN6577905) was diluted at 1:1000. A goat anti-rabbit IgG H&L(HRP) at 1:10000 dilution was used as the secondary antibody. Lysate at 20 µg.