

Datasheet for ABIN6242573
anti-PDCD6 antibody (AA 103-137)[Go to Product page](#)

1 Image

Overview

Quantity:	400 µL
Target:	PDCD6
Binding Specificity:	AA 103-137
Reactivity:	Mouse
Host:	Rabbit
Clonality:	Polyclonal
Conjugate:	This PDCD6 antibody is un-conjugated
Application:	Western Blotting (WB)

Product Details

Immunogen:	This PDCD6 antibody is generated from a rabbit immunized with a KLH conjugated synthetic peptide between 103-137 amino acids from the Central region of human PDCD6.
Clone:	RB49787
Isotype:	Ig Fraction
Purification:	This antibody is purified through a protein A column, followed by peptide affinity purification.

Target Details

Target:	PDCD6
Alternative Name:	PDCD6 (PDCD6 Products)
Background:	Calcium-binding protein required for T-cell receptor-, Fas-, and glucocorticoid-induced cell

Target Details

death. May mediate Ca(2+)- regulated signals along the death pathway (By similarity). Calcium-dependent adapter necessary for the association between PDCD6IP and TSG101. Interaction with DAPK1 can accelerate apoptotic cell death by increasing caspase-3 activity. May inhibit KDR/VEGFR2-dependent angiogenesis, the function involves inhibition of VEGF-induced phosphoprylation of the Akt signaling pathway. Seems to play a role in the regulation of the distribution and function of MCOLN1 in the endosomal pathway. Isoform 2 has a lower Ca(2+) affinity than isoform 1. Isoform 1 and, to a lesser extend, isoform 2, can stabilize SHISA5.

Molecular Weight: 21868

UniProt: [O75340](#)

Pathways: [Positive Regulation of Endopeptidase Activity](#)

Application Details

Application Notes: WB: 1:1000

Restrictions: For Research Use only

Handling

Format: Liquid

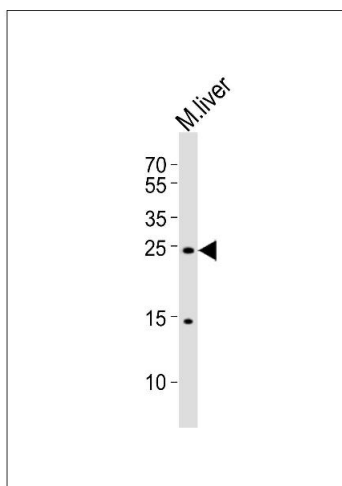
Buffer: Purified polyclonal antibody supplied in PBS with 0.09 % (W/V) sodium azide.

Preservative: Sodium azide

Precaution of Use: This product contains Sodium azide: a POISONOUS AND HAZARDOUS SUBSTANCE which should be handled by trained staff only.

Storage: 4 °C,-20 °C

Expiry Date: 6 months



Western Blotting

Image 1. Western blot analysis of lysate from mouse liver tissue lysate, using PDCD6 Antibody (Center) (ABIN6242573 and ABIN6577555). (ABIN6242573 and ABIN6577555) was diluted at 1:1000. A goat anti-rabbit IgG H&L(HRP) at 1:5000 dilution was used as the secondary antibody. Lysate at 35 µg.