



[Go to Product page](#)

Datasheet for ABIN6242575  
**anti-PARS2 antibody (C-Term)**

4 Images

Overview

Quantity:	400 µL
Target:	PARS2
Binding Specificity:	AA 390-417, C-Term
Reactivity:	Human, Mouse
Host:	Rabbit
Clonality:	Polyclonal
Conjugate:	This PARS2 antibody is un-conjugated
Application:	Western Blotting (WB), Immunohistochemistry (Paraffin-embedded Sections) (IHC (p)), Flow Cytometry (FACS)

Product Details

Immunogen:	This PARS2 antibody is generated from rabbits immunized with a KLH conjugated synthetic peptide between 390-417 amino acids from the C-terminal region of human PARS2.
Clone:	RB14853
Isotype:	Ig Fraction
Purification:	This antibody is prepared by Saturated Ammonium Sulfate (SAS) precipitation followed by dialysis against PBS.

Target Details

Target:	PARS2
Alternative Name:	PARS2 ( <a href="#">PARS2 Products</a> )

## Target Details

**Background:** Forms part of a macromolecular complex that catalyzes the attachment of specific amino acids to cognate tRNAs during protein synthesis. Modulates the secretion of AIMP1 and may be involved in generation of the inflammatory cytokine EMAP2 from AIMP1.

**Molecular Weight:** 53263

**NCBI Accession:** [NP\\_689481](#)

**UniProt:** [Q7L3T8](#)

## Application Details

**Application Notes:** WB: 1:1000. WB: 1:1000. IHC-P: 1:50~100. FC: 1:10~50

**Restrictions:** For Research Use only

## Handling

**Format:** Liquid

**Buffer:** Purified polyclonal antibody supplied in PBS with 0.09 % (W/V) sodium azide.

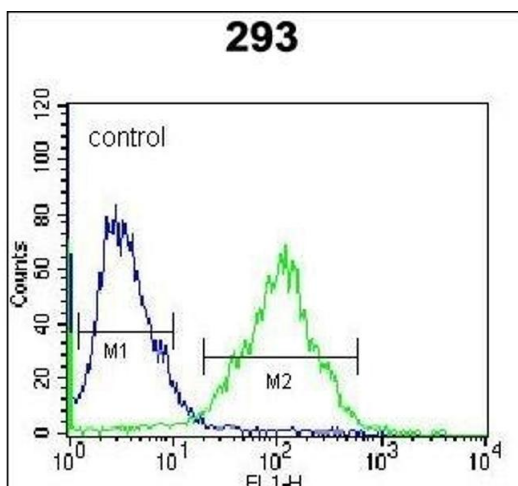
**Preservative:** Sodium azide

**Precaution of Use:** This product contains Sodium azide: a POISONOUS AND HAZARDOUS SUBSTANCE which should be handled by trained staff only.

**Storage:** 4 °C,-20 °C

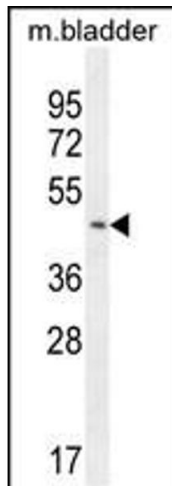
**Expiry Date:** 6 months

## Images



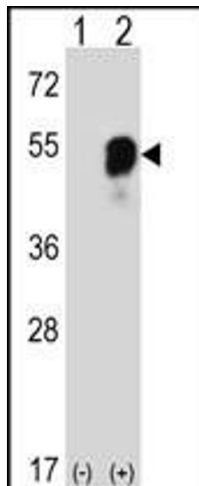
### Flow Cytometry

**Image 1.** RS2 Antibody (C-term) (ABIN6242575 and ABIN6577319) flow cytometric analysis of 293 cells (right histogram) compared to a negative control cell (left histogram). FITC-conjugated goat-anti-rabbit secondary antibodies were used for the analysis.



#### Western Blotting

**Image 2.** RS2 Antibody (C-term) (ABIN6242575 and ABIN6577319) western blot analysis in mouse bladder tissue lysates (35 µg/lane). This demonstrates the RS2 antibody detected the RS2 protein (arrow).



#### Western Blotting

**Image 3.** Western blot analysis of RS2 (arrow) using rabbit polyclonal RS2 Antibody (C-term) (ABIN6242575 and ABIN6577319). 293 cell lysates (2 µg/lane) either nontransfected (Lane 1) or transiently transfected (Lane 2) with the RS2 gene.

Please check the [product details page](#) for more images. Overall 4 images are available for ABIN6242575.