

Datasheet for ABIN6242601

anti-RCC1 antibody**2** Images[Go to Product page](#)

Overview

Quantity:	400 µL
Target:	RCC1
Reactivity:	Human, Mouse
Host:	Mouse
Clonality:	Monoclonal
Conjugate:	This RCC1 antibody is un-conjugated
Application:	Western Blotting (WB)

Product Details

Immunogen:	This RCC1 monoclonal antibody is generated from mouse immunized with RCC1 recombinant protein.
Clone:	332CT2-1-1
Isotype:	IgG1 kappa
Purification:	This antibody is purified through a protein G column, followed by dialysis against PBS.

Target Details

Target:	RCC1
Alternative Name:	RCC1 (RCC1 Products)
Background:	Guanine-nucleotide releasing factor that promotes the exchange of Ran-bound GDP by GTP. Involved in the regulation of onset of chromosome condensation in the S phase. Binds both to the nucleosomes and double-stranded DNA. RCC1-Ran complex (together with other proteins)

Target Details

acts as a component of a signal transmission pathway that detects unreplicated DNA. Plays a key role in nucleo-cytoplasmic transport, mitosis and nuclear-envelope assembly.

Molecular Weight:	44969
NCBI Accession:	NP_001041659 , NP_001041660 , NP_001041664 , NP_001260
UniProt:	P18754
Pathways:	Chromatin Binding , Protein targeting to Nucleus

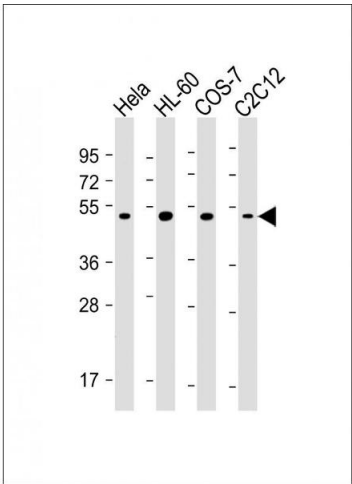
Application Details

Application Notes:	WB: 1:100~250. WB: 1:2000-1:4000
Restrictions:	For Research Use only

Handling

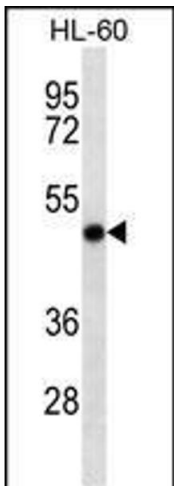
Format:	Liquid
Buffer:	Purified monoclonal antibody supplied in PBS with 0.09 % (W/V) sodium azide.
Preservative:	Sodium azide
Precaution of Use:	This product contains Sodium azide: a POISONOUS AND HAZARDOUS SUBSTANCE which should be handled by trained staff only.
Storage:	4 °C,-20 °C
Expiry Date:	6 months

Images



Western Blotting

Image 1. All lanes : Anti-RCC1 Antibody at 1:2000-1:4000 dilution Lane 1: HeLa whole cell lysate Lane 2: HL-60 whole cell lysate Lane 3: COS-7 whole cell lysate Lane 4: C2C12 whole cell lysate Lysates/proteins at 20 µg per lane. Secondary Goat Anti-mouse IgG, (H+L), Peroxidase conjugated at 1/10000 dilution. Predicted band size : 45 kDa Blocking/Dilution buffer: 5 % NFDM/TBST.



Western Blotting

Image 2. RCC1 Antibody (ABIN6242601 and ABIN6577061) western blot analysis in HL-60 cell line lysates (35 μ g/lane). This demonstrates the RCC1 antibody detected the RCC1 protein (arrow).