

Datasheet for ABIN6242603

anti-RGMB antibody

3 Images

[Go to Product page](#)

Overview

Quantity:	200 µL
Target:	RGMB
Reactivity:	Human, Mouse
Host:	Rabbit
Clonality:	Polyclonal
Conjugate:	This RGMB antibody is un-conjugated
Application:	Western Blotting (WB), Immunohistochemistry (Paraffin-embedded Sections) (IHC (p))

Product Details

Immunogen:	This RGMB antibody is generated from a rabbit immunized with a recombinant protein of human RGMB.
Clone:	RB56812
Isotype:	Ig Fraction
Purification:	This antibody is purified through a protein A column, followed by peptide affinity purification.

Target Details

Target:	RGMB
Alternative Name:	RGMB (RGMB Products)
Background:	Member of the repulsive guidance molecule (RGM) family that contributes to the patterning of the developing nervous system (By similarity),. Acts as a bone morphogenetic protein (BMP) coreceptor that potentiates BMP signaling (By similarity). Promotes neuronal adhesion (By

Target Details

similarity). May inhibit neurite outgrowth.

Molecular Weight: 47547

UniProt: [Q6NW40](#)

Application Details

Application Notes: WB: 1:2000. WB: 1:2000. IHC-P-Leica: 1:500

Restrictions: For Research Use only

Handling

Format: Liquid

Buffer: Purified polyclonal antibody supplied in PBS with 0.09 % (W/V) sodium azide.

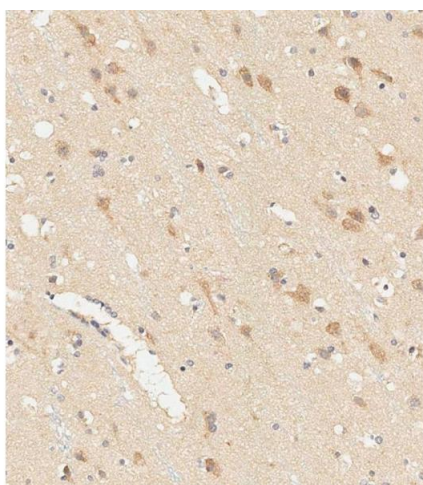
Preservative: Sodium azide

Precaution of Use: This product contains Sodium azide: a POISONOUS AND HAZARDOUS SUBSTANCE which should be handled by trained staff only.

Storage: 4 °C,-20 °C

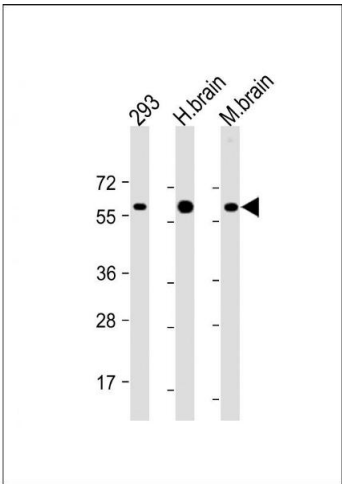
Expiry Date: 6 months

Images



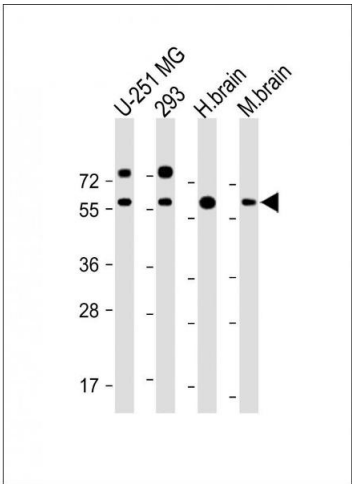
Immunohistochemistry (Paraffin-embedded Sections)

Image 1. Immunohistochemical analysis of paraffin-embedded human brain tissue using (ABIN6242603 and ABIN6578838) performed on the Leica® BOND RXm. Samples were incubated with primary Antibody (1/500) for 1 hours at room temperature. A undiluted biotinylated CRF Anti-Polyvalent HRP Polymer antibody was used as the secondary antibody.



Western Blotting

Image 2. All lanes : Anti-RGMB Antibody at 1:2000 dilution
Lane 1: 293 whole cell lysate Lane 2: Human brain lysate
Lane 3: Mouse brain lysate Lysates/proteins at 20 µg per lane. Secondary Goat Anti-Rabbit IgG, (H+L), Peroxidase conjugated at 1/10000 dilution. Predicted band size : 48 kDa
Blocking/Dilution buffer: 5 % NFDM/TBST.



Western Blotting

Image 3. All lanes : Anti-RGMB Antibody at 1:2000 dilution
Lane 1: U-251 MG whole cell lysate Lane 2: 293 whole cell lysate
Lane 3: Human brain lysate Lane 4: Mouse brain lysate Lysates/proteins at 20 µg per lane. Secondary Goat Anti-Rabbit IgG, (H+L), Peroxidase conjugated at 1/10000 dilution. Predicted band size : 48 kDa
Blocking/Dilution buffer: 5 % NFDM/TBST.