

Datasheet for ABIN6242615

**anti-RPS6 antibody**

7 Images

[Go to Product page](#)

## Overview

Quantity:	400 µL
Target:	RPS6
Reactivity:	Human, Rat
Host:	Mouse
Clonality:	Monoclonal
Conjugate:	This RPS6 antibody is un-conjugated
Application:	Western Blotting (WB), Immunofluorescence (IF), Immunohistochemistry (Paraffin-embedded Sections) (IHC (p)), Flow Cytometry (FACS)

## Product Details

Immunogen:	This RPS6 antibody is generated from a mouse immunized with RPS6 recombinant protein.
Clone:	981CT2-1-1
Isotype:	IgG1
Predicted Reactivity:	Pr, M
Purification:	This antibody is purified through a protein G column, followed by dialysis against PBS.

## Target Details

Target:	RPS6
Alternative Name:	RPS6 ( <a href="#">RPS6 Products</a> )
Background:	May play an important role in controlling cell growth and proliferation through the selective

## Target Details

	translation of particular classes of mRNA.
Molecular Weight:	28681
UniProt:	<a href="#">P62753</a>
Pathways:	<a href="#">Carbohydrate Homeostasis</a> , <a href="#">Ribonucleoprotein Complex Subunit Organization</a> , <a href="#">Ribosome Assembly</a>

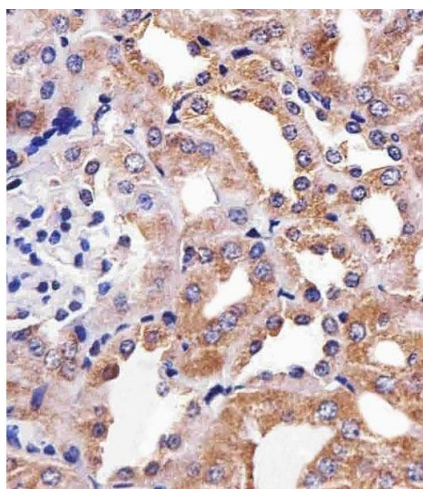
## Application Details

Application Notes:	IF: 1:25. IF: 1:25. WB: 1:2000. WB: 1:1000. IHC-P: 1:25. IHC-P: 1:25. IHC-P: 1:25
Restrictions:	For Research Use only

## Handling

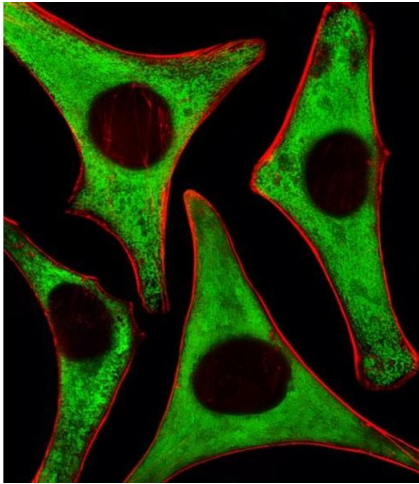
Format:	Liquid
Buffer:	Purified monoclonal antibody supplied in PBS with 0.09 % (W/V) sodium azide.
Preservative:	Sodium azide
Precaution of Use:	This product contains Sodium azide: a POISONOUS AND HAZARDOUS SUBSTANCE which should be handled by trained staff only.
Storage:	4 °C, -20 °C
Expiry Date:	6 months

## Images



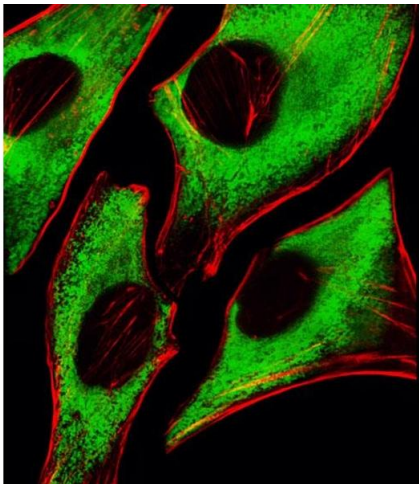
### Immunohistochemistry (Paraffin-embedded Sections)

**Image 1.** Immunohistochemical analysis of paraffin-embedded M. kidney section using RPS6 Antibody (N-term) . was diluted at 1:25 dilution. A peroxidase-conjugated goat anti-mouse IgG at 1:400 dilution was used as the secondary antibody, followed by DAB staining.



#### Immunofluorescence

**Image 2.** Fluorescent image of HeLa cells stained with RPS6 Antibody (N-term) . was diluted at 1:25 dilution. An Alexa Fluor® 488-conjugated goat anti-mouse IgG at 1:400 dilution was used as the secondary antibody (green). Cytoplasmic actin was counterstained with Alexa Fluor® 555 conjugated with Phalloidin (red).



#### Immunofluorescence

**Image 3.** Fluorescent image of HeLa cells stained with RPS6 Antibody (N-term) (ABIN6242615 and ABIN6577071). (ABIN6242615 and ABIN6577071) was diluted at 1:25 dilution. An Alexa Fluor® 488-conjugated goat anti-mouse IgG at 1:400 dilution was used as the secondary antibody (green). Cytoplasmic actin was counterstained with Alexa Fluor® 555 conjugated with Phalloidin (red).

Please check the [product details page](#) for more images. Overall 7 images are available for ABIN6242615.