

Datasheet for ABIN6242616
anti-RIN1 antibody (AA 20-70)[Go to Product page](#)

1 Image

Overview

Quantity:	400 µL
Target:	RIN1
Binding Specificity:	AA 20-70
Reactivity:	Human
Host:	Rabbit
Clonality:	Polyclonal
Conjugate:	This RIN1 antibody is un-conjugated
Application:	Western Blotting (WB)

Product Details

Immunogen:	This antibody is generated from a rabbit immunized with a KLH conjugated synthetic peptide between 20-70 amino acids from human.
Clone:	RB46939
Isotype:	Ig Fraction
Purification:	This antibody is purified through a protein A column, followed by peptide affinity purification.

Target Details

Target:	RIN1
Alternative Name:	RIN1 (RIN1 Products)
Background:	Ras effector protein, which may serve as an inhibitory modulator of neuronal plasticity in

Target Details

aversive memory formation. Can affect Ras signaling at different levels. First, by competing with RAF1 protein for binding to activated Ras. Second, by enhancing signaling from ABL1 and ABL2, which regulate cytoskeletal remodeling. Third, by activating RAB5A, possibly by functioning as a guanine nucleotide exchange factor (GEF) for RAB5A, by exchanging bound GDP for free GTP, and facilitating Ras-activated receptor endocytosis.

Molecular Weight: 84099

UniProt: [Q13671](#)

Application Details

Application Notes: WB: 1:1000

Restrictions: For Research Use only

Handling

Format: Liquid

Buffer: Purified polyclonal antibody supplied in PBS with 0.09 % (W/V) sodium azide.

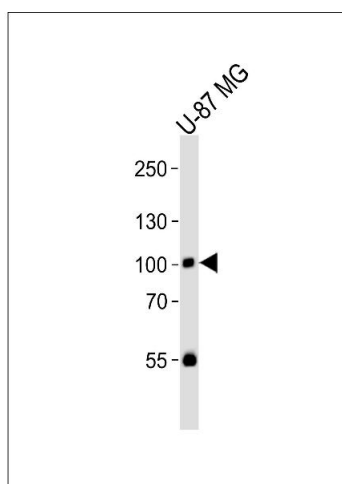
Preservative: Sodium azide

Precaution of Use: This product contains Sodium azide: a POISONOUS AND HAZARDOUS SUBSTANCE which should be handled by trained staff only.

Storage: 4 °C,-20 °C

Expiry Date: 6 months

Images



Western Blotting

Image 1. Western blot analysis of lysate from U-87 MG cell line, using HUN-RIN1(Y36) antibody (ABIN6242616 and ABIN6577600). (ABIN6242616 and ABIN6577600) was diluted at 1:1000. A goat anti-rabbit IgG H&L(HRP) at 1:10000 dilution was used as the secondary antibody. Lysate at 35 µg.