



[Go to Product page](#)

Datasheet for ABIN6242619
anti-Recoverin antibody (C-Term)

1 Image

Overview

Quantity:	400 µL
Target:	Recoverin (RCVRN)
Binding Specificity:	AA 137-171, C-Term
Reactivity:	Mouse, Rat
Host:	Rabbit
Clonality:	Polyclonal
Conjugate:	This Recoverin antibody is un-conjugated
Application:	Western Blotting (WB)

Product Details

Immunogen:	This RCVRN antibody is generated from a rabbit immunized with a KLH conjugated synthetic peptide between 137-171 amino acids from the C-terminal region of human RCVRN.
Clone:	RB47778
Isotype:	Ig Fraction
Purification:	This antibody is purified through a protein A column, followed by peptide affinity purification.

Target Details

Target:	Recoverin (RCVRN)
Alternative Name:	RCVRN (RCVRN Products)
Background:	Seems to be implicated in the pathway from retinal rod guanylate cyclase to rhodopsin. May be

Target Details

involved in the inhibition of the phosphorylation of rhodopsin in a calcium-dependent manner.
The calcium-bound recoverin prolongs the photoresponse.

Molecular Weight: 23130

UniProt: [P35243](#)

Pathways: [Regulation of G-Protein Coupled Receptor Protein Signaling, Phototransduction](#)

Application Details

Application Notes: WB: 1:1000

Restrictions: For Research Use only

Handling

Format: Liquid

Buffer: Purified polyclonal antibody supplied in PBS with 0.09 % (W/V) sodium azide.

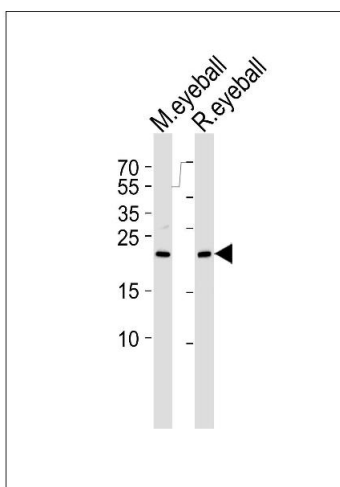
Preservative: Sodium azide

Precaution of Use: This product contains Sodium azide: a POISONOUS AND HAZARDOUS SUBSTANCE which should be handled by trained staff only.

Storage: 4 °C, -20 °C

Expiry Date: 6 months

Images



Western Blotting

Image 1. Western blot analysis of lysates from mouse eyeball and rat eyeball tissue lysate (from left to right), using RCVRN Antibody (C-term) (ABIN6242619 and ABIN6577448). (ABIN6242619 and ABIN6577448) was diluted at 1:1000 at each lane. A goat anti-rabbit IgG H&L(HRP) at 1:5000 dilution was used as the secondary antibody. Lysates at 35 µg per lane.