

Datasheet for ABIN6242620
anti-RFX4 antibody (AA 58-89)[Go to Product page](#)

1 Image

Overview

Quantity:	400 µL
Target:	RFX4
Binding Specificity:	AA 58-89
Reactivity:	Human
Host:	Rabbit
Clonality:	Polyclonal
Conjugate:	This RFX4 antibody is un-conjugated
Application:	Western Blotting (WB)

Product Details

Immunogen:	This (DANRE) rfx4 antibody is generated from a rabbit immunized with a KLH conjugated synthetic peptide between 58-89 amino acids from the human region of human (DANRE) rfx4.
Clone:	RB49772
Isotype:	Ig Fraction
Predicted Reactivity:	M
Purification:	This antibody is purified through a protein A column, followed by peptide affinity purification.

Target Details

Target:	RFX4
Alternative Name:	rfx4 (RFX4 Products)

Target Details

Background:	May activate transcription by interacting directly with the X-box (By similarity).
Molecular Weight:	82819
UniProt:	A2BGA0

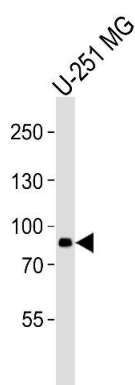
Application Details

Application Notes:	WB: 1:1000
Restrictions:	For Research Use only

Handling

Format:	Liquid
Buffer:	Purified polyclonal antibody supplied in PBS with 0.09 % (W/V) sodium azide.
Preservative:	Sodium azide
Precaution of Use:	This product contains Sodium azide: a POISONOUS AND HAZARDOUS SUBSTANCE which should be handled by trained staff only.
Storage:	4 °C,-20 °C
Expiry Date:	6 months

Images



Western Blotting

Image 1. Western blot analysis of lysate from U-251 MG cell line, using (DANRE) rfx4 Antibody (ABIN6242620 and ABIN6577364). (ABIN6242620 and ABIN6577364) was diluted at 1:1000. A goat anti-rabbit IgG H&L(HRP) at 1:5000 dilution was used as the secondary antibody. Lysate at 35 µg.