

Datasheet for ABIN6242622
anti-RSF1 antibody (C-Term)[Go to Product page](#)

1 Image

Overview

Quantity:	400 µL
Target:	RSF1
Binding Specificity:	AA 1355-1389, C-Term
Reactivity:	Human
Host:	Rabbit
Clonality:	Polyclonal
Conjugate:	This RSF1 antibody is un-conjugated
Application:	Western Blotting (WB)

Product Details

Immunogen:	This RSF1 antibody is generated from a rabbit immunized with a KLH conjugated synthetic peptide between 1355-1389 amino acids from the C-terminal region of human RSF1.
Clone:	RB50707
Isotype:	Ig Fraction
Purification:	This antibody is purified through a protein A column, followed by peptide affinity purification.

Target Details

Target:	RSF1
Alternative Name:	RSF1 (RSF1 Products)
Background:	Required for assembly of regular nucleosome arrays by the RSF chromatin-remodeling

Target Details

complex. Facilitates transcription of hepatitis B virus (HBV) genes by the pX transcription activator. In case of infection by HBV, together with pX, it represses TNF- alpha induced NF-kappa-B transcription activation. Represses transcription when artificially recruited to chromatin by fusion to a heterogeneous DNA binding domain.

Molecular Weight: 163821

UniProt: [Q96T23](#)

Application Details

Application Notes: WB: 1:1000

Restrictions: For Research Use only

Handling

Format: Liquid

Buffer: Purified polyclonal antibody supplied in PBS with 0.09 % (W/V) sodium azide.

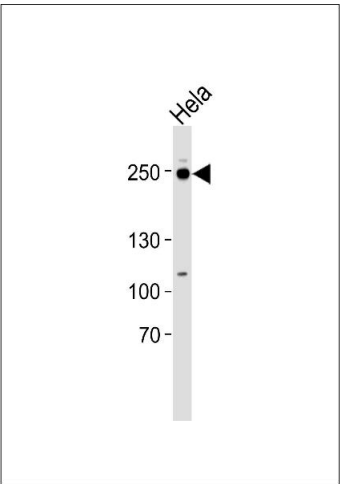
Preservative: Sodium azide

Precaution of Use: This product contains Sodium azide: a POISONOUS AND HAZARDOUS SUBSTANCE which should be handled by trained staff only.

Storage: 4 °C,-20 °C

Expiry Date: 6 months

Images



Western Blotting

Image 1. Western blot analysis of lysate from HeLa cell line, using RSF1 Antibody (C-term) (ABIN6242622 and ABIN6577509). (ABIN6242622 and ABIN6577509) was diluted at 1:1000. A goat anti-rabbit IgG H&L(HRP) at 1:5000 dilution was used as the secondary antibody. Lysate at 35 µg.