

Datasheet for ABIN6242627  
**anti-SMYD3 antibody (AA 209-236)**[Go to Product page](#)

## 3 Images

## Overview

Quantity:	400 µL
Target:	SMYD3
Binding Specificity:	AA 209-236
Reactivity:	Human
Host:	Rabbit
Clonality:	Polyclonal
Conjugate:	This SMYD3 antibody is un-conjugated
Application:	Western Blotting (WB), Flow Cytometry (FACS)

## Product Details

Immunogen:	This SMYD3 antibody is generated from rabbits immunized with a KLH conjugated synthetic peptide between 209-236 amino acids from the Central region of human SMYD3.
Clone:	RB19145
Isotype:	Ig Fraction
Purification:	This antibody is prepared by Saturated Ammonium Sulfate (SAS) precipitation followed by dialysis against PBS.

## Target Details

Target:	SMYD3
Alternative Name:	SMYD3 ( <a href="#">SMYD3 Products</a> )

## Target Details

Background:	SMYD3 is a histone methyltransferase that plays a role in transcriptional regulation as a member of an RNA polymerase complex.
Molecular Weight:	49097
NCBI Accession:	<a href="#">NP_001161212</a> , <a href="#">NP_073580</a>
UniProt:	<a href="#">Q9H7B4</a>

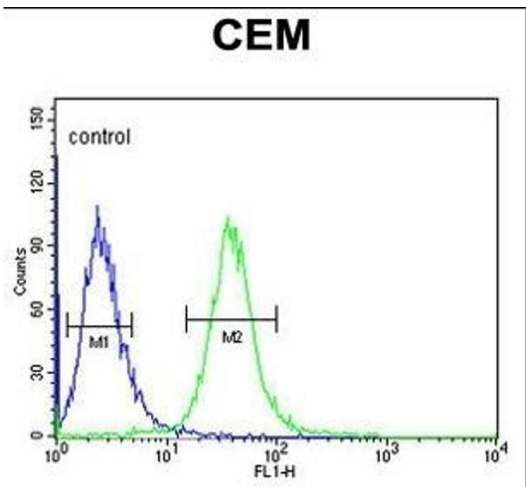
## Application Details

Application Notes:	WB: 1:1000. WB: 1:1000. FC: 1:10~50
Restrictions:	For Research Use only

## Handling

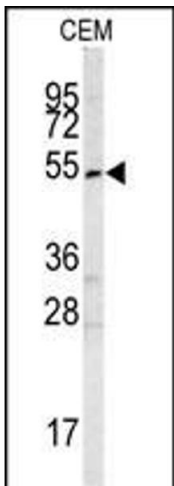
Format:	Liquid
Buffer:	Purified polyclonal antibody supplied in PBS with 0.09 % (W/V) sodium azide.
Preservative:	Sodium azide
Precaution of Use:	This product contains Sodium azide: a POISONOUS AND HAZARDOUS SUBSTANCE which should be handled by trained staff only.
Storage:	4 °C, -20 °C
Expiry Date:	6 months

## Images



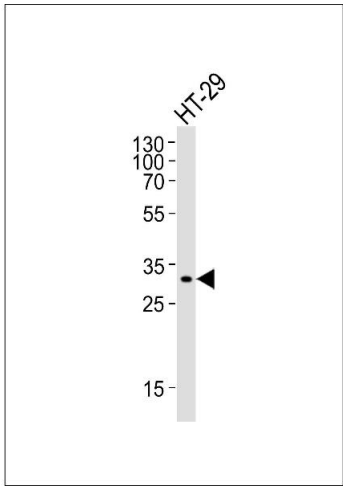
### Flow Cytometry

**Image 1.** SMYD3 Antibody (Center) (ABIN6242627 and ABIN6578989) flow cytometric analysis of CEM cells (right histogram) compared to a negative control cell (left histogram). FITC-conjugated goat-anti-rabbit secondary antibodies were used for the analysis.



#### Western Blotting

**Image 2.** Western blot analysis of SMYD3 antibody (Center) (ABIN6242627 and ABIN6578989) in CEM cell line lysates (35 µg/lane). SMYD3 (arrow) was detected using the purified Pab.



#### Western Blotting

**Image 3.** Western blot analysis of lysate from HT-29 cell line, using SMYD3 Antibody (Center) (ABIN6242627 and ABIN6578989). (ABIN6242627 and ABIN6578989) was diluted at 1:1000. A goat anti-rabbit IgG H&L(HRP) at 1:10000 dilution was used as the secondary antibody. Lysate at 20 µg.