

Datasheet for ABIN6242631
anti-SMAD1 antibody (AA 163-196)[Go to Product page](#)

4 Images

Overview

Quantity:	400 µL
Target:	SMAD1
Binding Specificity:	AA 163-196
Reactivity:	Human, Mouse, Rat
Host:	Rabbit
Clonality:	Polyclonal
Conjugate:	This SMAD1 antibody is un-conjugated
Application:	Western Blotting (WB), Immunofluorescence (IF), Immunohistochemistry (Paraffin-embedded Sections) (IHC (p))

Product Details

Immunogen:	This SMAD1 antibody is generated from a rabbit immunized with a KLH conjugated synthetic peptide between 163-196 amino acids from the Central region of human SMAD1.
Clone:	RB43846
Isotype:	Ig Fraction
Predicted Reactivity:	B
Purification:	This antibody is purified through a protein A column, followed by peptide affinity purification.

Target Details

Target:	SMAD1
---------	-------

Target Details

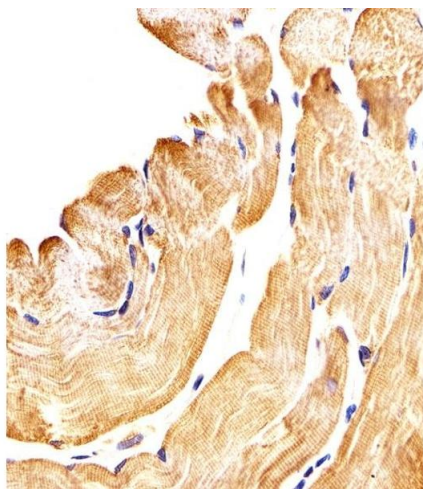
Alternative Name:	SMAD1 (SMAD1 Products)
Background:	Transcriptional modulator activated by BMP (bone morphogenetic proteins) type 1 receptor kinase. SMAD1 is a receptor-regulated SMAD (R-SMAD). SMAD1/OAZ1/PSMB4 complex mediates the degradation of the CREBBP/EP300 repressor SNIP1.
Molecular Weight:	52260
UniProt:	Q15797
Pathways:	Stem Cell Maintenance , Regulation of Muscle Cell Differentiation , Skeletal Muscle Fiber Development

Application Details

Application Notes:	IF: 1:25. WB: 1:1000. IHC-P: 1:25. IHC-P: 1:25
Restrictions:	For Research Use only

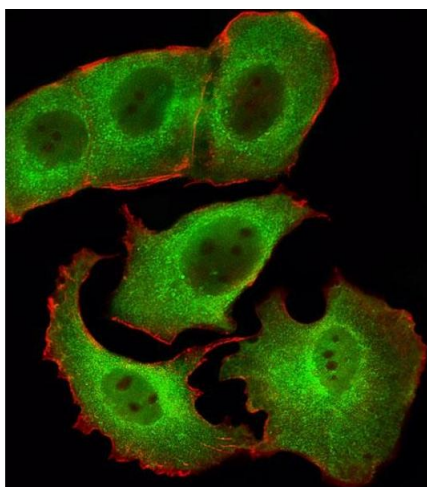
Handling

Format:	Liquid
Buffer:	Purified polyclonal antibody supplied in PBS with 0.09 % (W/V) sodium azide.
Preservative:	Sodium azide
Precaution of Use:	This product contains Sodium azide: a POISONOUS AND HAZARDOUS SUBSTANCE which should be handled by trained staff only.
Storage:	4 °C,-20 °C
Expiry Date:	6 months



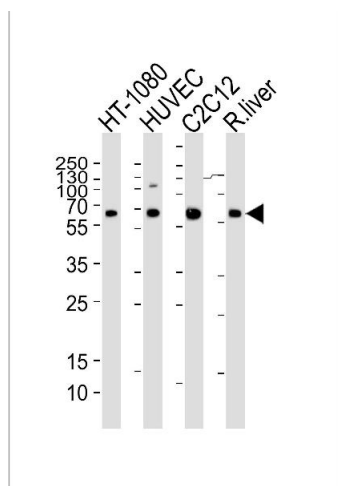
Immunohistochemistry (Paraffin-embedded Sections)

Image 1. Immunohistochemical analysis of paraffin-embedded H. skeletal muscle section using SD1 Antibody (Center) (ABIN6242631 and ABIN6577423). (ABIN6242631 and ABIN6577423) was diluted at 1:25 dilution. A peroxidase-conjugated goat anti-rabbit IgG at 1:400 dilution was used as the secondary antibody, followed by DAB staining.



Immunofluorescence

Image 2. Fluorescent image of MCF-7 cells stained with SD1 Antibody (Center) (ABIN6242631 and ABIN6577423). (ABIN6242631 and ABIN6577423) was diluted at 1:25 dilution. An Alexa Fluor 488-conjugated goat anti-rabbit IgG at 1:400 dilution was used as the secondary antibody (green). Cytoplasmic actin was counterstained with Alexa Fluor® 555 conjugated with Phalloidin (red).



Western Blotting

Image 3. Western blot analysis of lysates from HT-1080, HUVEC, mouse C2C12 cell line and rat liver tissue lysate (from left to right), using SD1 Antibody (Center) (ABIN6242631 and ABIN6577423). (ABIN6242631 and ABIN6577423) was diluted at 1:1000 at each lane. A goat anti-rabbit IgG H&L(HRP) at 1:5000 dilution was used as the secondary antibody. Lysates at 35 µg per lane.

Please check the [product details page](#) for more images. Overall 4 images are available for ABIN6242631.