

Datasheet for ABIN6242644

anti-Mammaglobin A antibody (AA 22-51)[Go to Product page](#)**1** Image

Overview

Quantity:	200 µL
Target:	Mammaglobin A (SCGB2A2)
Binding Specificity:	AA 22-51
Reactivity:	Human
Host:	Rabbit
Clonality:	Polyclonal
Conjugate:	This Mammaglobin A antibody is un-conjugated
Application:	Western Blotting (WB)

Product Details

Immunogen:	This SCGB2A2 antibody is generated from a rabbit immunized with a KLH conjugated synthetic peptide between 22-51 amino acids from human SCGB2A2.
Clone:	RB54142
Isotype:	Ig Fraction
Purification:	This antibody is purified through a protein A column, followed by peptide affinity purification.

Target Details

Target:	Mammaglobin A (SCGB2A2)
Alternative Name:	SCGB2A2 (SCGB2A2 Products)
Molecular Weight:	10499

Target Details

UniProt: [Q13296](#)

Application Details

Application Notes: WB: 1:2000

Restrictions: For Research Use only

Handling

Format: Liquid

Buffer: Purified polyclonal antibody supplied in PBS with 0.09 % (W/V) sodium azide.

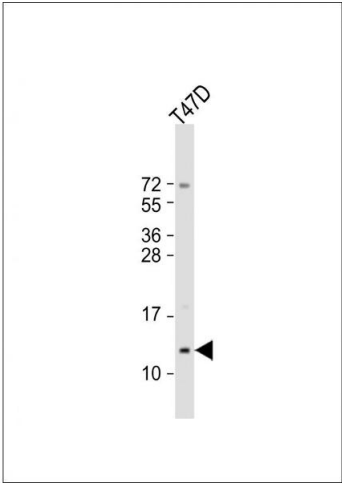
Preservative: Sodium azide

Precaution of Use: This product contains Sodium azide: a POISONOUS AND HAZARDOUS SUBSTANCE which should be handled by trained staff only.

Storage: 4 °C,-20 °C

Expiry Date: 6 months

Images



Western Blotting

Image 1. Anti-SCGB2A2 Antibody (N-Term) at 1:2000 dilution + T47D whole cell lysate Lysates/proteins at 20 µg per lane. Secondary Goat Anti-Rabbit IgG, (H+L), Peroxidase conjugated at 1/10000 dilution. Predicted band size : 10 kDa Blocking/Dilution buffer: 5 % NFDM/TBST.