

Datasheet for ABIN6242649  
**anti-SREBF2 antibody (AA 441-473)**[Go to Product page](#)

## 1 Image

## Overview

Quantity:	400 µL
Target:	SREBF2
Binding Specificity:	AA 441-473
Reactivity:	Zebrafish (Danio rerio)
Host:	Rabbit
Clonality:	Polyclonal
Conjugate:	This SREBF2 antibody is un-conjugated
Application:	Western Blotting (WB)

## Product Details

Immunogen:	This (DANRE) srebf2 antibody is generated from a rabbit immunized with a KLH conjugated synthetic peptide between 441-473 amino acids of DANRE srebf2.
Clone:	RB49773
Isotype:	IgG
Purification:	This antibody is purified through a protein A column, followed by peptide affinity purification.

## Target Details

Target:	SREBF2
Alternative Name:	srebf2 ( <a href="#">SREBF2 Products</a> )
Background:	Transcriptional activator required for lipid homeostasis. May regulate transcription of the LDL

## Target Details

receptor gene as well as the cholesterol and fatty acid synthesis pathways. Binds the sterol regulatory element 1 (SRE-1) (5'-ATCACCCCAC-3') found in the flanking region of the LDRL and HMG-CoA synthase genes (By similarity).

Molecular Weight: 120321

UniProt: [A3KNA7](#)

Pathways: [Regulation of Lipid Metabolism by PPARalpha](#)

## Application Details

Application Notes: WB: 1:1000

Restrictions: For Research Use only

## Handling

Format: Liquid

Buffer: Purified polyclonal antibody supplied in PBS with 0.09 % (W/V) sodium azide.

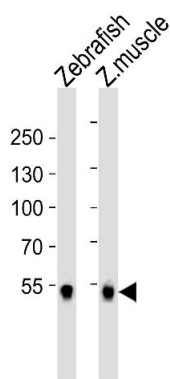
Preservative: Sodium azide

Precaution of Use: This product contains Sodium azide: a POISONOUS AND HAZARDOUS SUBSTANCE which should be handled by trained staff only.

Storage: 4 °C,-20 °C

Expiry Date: 6 months

## Images



### Western Blotting

**Image 1.** Western blot analysis of lysates from Zebrafish and zebra fish muscle tissue lysate (from left to right), using (DANRE) srebf2 Antibody (Center) Azb18706a. Azb18706a was diluted at 1:1000 at each lane. A goat anti-rabbit IgG H&L(HRP) at 1:5000 dilution was used as the secondary antibody. Lysates at 35 µg per lane.