



Datasheet for ABIN6242650
anti-SULF1 antibody (AA 704-738)



[Go to Product page](#)

2 Images

Overview

Quantity:	200 µL
Target:	SULF1
Binding Specificity:	AA 704-738
Reactivity:	Human
Host:	Rabbit
Clonality:	Polyclonal
Conjugate:	This SULF1 antibody is un-conjugated
Application:	Western Blotting (WB), Flow Cytometry (FACS)

Product Details

Immunogen:	This SULF1 antibody is generated from a rabbit immunized with a KLH conjugated synthetic peptide between 704-738 amino acids from human SULF1.
Clone:	RB56204
Isotype:	Ig Fraction
Purification:	This antibody is purified through a protein A column, followed by peptide affinity purification.

Target Details

Target:	SULF1
Alternative Name:	SULF1 (SULF1 Products)
Background:	Exhibits arylsulfatase activity and highly specific endoglucosamine-6-sulfatase activity. It can

Target Details

remove sulfate from the C-6 position of glucosamine within specific subregions of intact heparin. Diminishes HSPG (heparan sulfate proteoglycans) sulfation, inhibits signaling by heparin-dependent growth factors, diminishes proliferation, and facilitates apoptosis in response to exogenous stimulation.

Molecular Weight: 101027

UniProt: [Q8IWU6](#)

Pathways: [EGFR Signaling Pathway](#)

Application Details

Application Notes: WB: 1:2000. FC: 1:25

Restrictions: For Research Use only

Handling

Format: Liquid

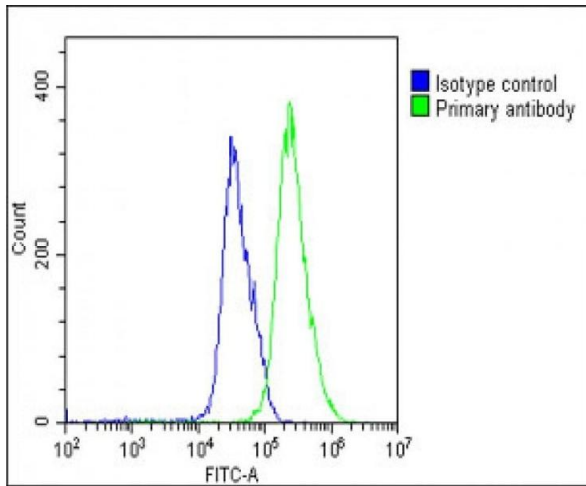
Buffer: Purified polyclonal antibody supplied in PBS with 0.09 % (W/V) sodium azide.

Preservative: Sodium azide

Precaution of Use: This product contains Sodium azide: a POISONOUS AND HAZARDOUS SUBSTANCE which should be handled by trained staff only.

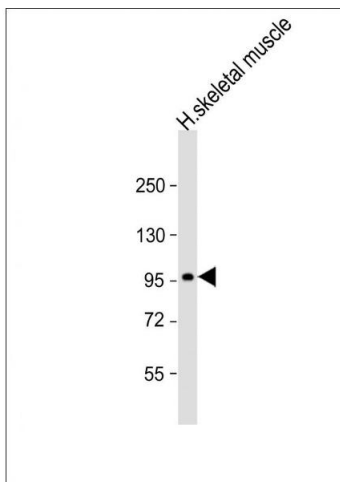
Storage: 4 °C,-20 °C

Expiry Date: 6 months



Flow Cytometry

Image 1. Overlay histogram showing U-251 MG cells stained with (ABIN6242650 and ABIN6578714)(green line). The cells were fixed with 2 % paraformaldehyde (10 min) and then permeabilized with 90 % methanol for 10 min. The cells were then incubated in 2 % bovine serum albumin to block non-specific protein-protein interactions followed by the antibody ((ABIN6242650 and ABIN6578714), 1:25 dilution) for 60 min at 37 °C. The secondary antibody used was Goat-Anti-Rabbit IgG, DyLight® 488 Conjugated Highly Cross-Adsorbed(1583138) at 1/200 dilution for 40 min at 37 °C. Isotype control antibody (blue line) was rabbit IgG1 (1 µg/1x10⁶ cells) used under the same conditions. Acquisition of >10,000 events was performed.



Western Blotting

Image 2. Anti-SULF1 Antibody (C-Term) at 1:2000 dilution + human skeletal muscle lysate Lysates/proteins at 20 µg per lane. Secondary Goat Anti-Rabbit IgG, (H+L), Peroxidase conjugated at 1/10000 dilution. Predicted band size : 101 kDa Blocking/Dilution buffer: 5 % NFDN/TBST.