

Datasheet for ABIN6242659
anti-TUBB antibody (AA 46-78)



[Go to Product page](#)

3 Images

Overview

Quantity:	200 µL
Target:	TUBB
Binding Specificity:	AA 46-78
Reactivity:	Mouse, Rat
Host:	Rabbit
Clonality:	Polyclonal
Conjugate:	This TUBB antibody is un-conjugated
Application:	Western Blotting (WB), Immunofluorescence (IF), Flow Cytometry (FACS)

Product Details

Immunogen:	This antibody is generated from a rabbit immunized with a KLH conjugated synthetic peptide between 46-78 amino acids from human.
Clone:	RB55943
Isotype:	Ig Fraction
Predicted Reactivity:	E, C, D, H, Pr, B, X, Ha, Pig
Purification:	This antibody is purified through a protein A column, followed by peptide affinity purification.

Target Details

Target:	TUBB
Alternative Name:	beta Tubulin (TUBB Products)

Target Details

Background:	Tubulin is the major constituent of microtubules. It binds two moles of GTP, one at an exchangeable site on the beta chain and one at a non-exchangeable site on the alpha chain.
Molecular Weight:	49671
UniProt:	P99024
Pathways:	Microtubule Dynamics, M Phase

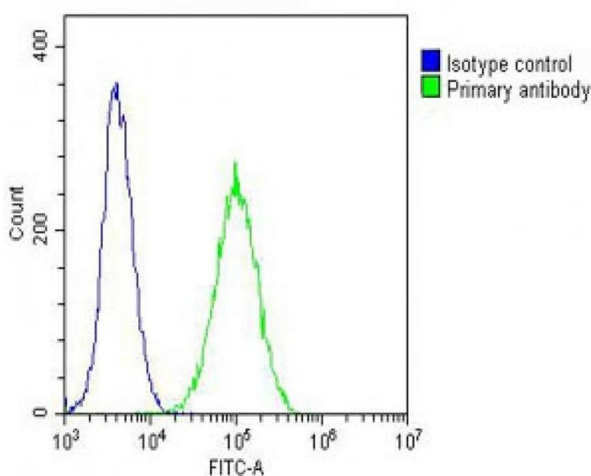
Application Details

Application Notes:	IF: 1:25. WB: 1:2000. FC: 1:25
Restrictions:	For Research Use only

Handling

Format:	Liquid
Buffer:	Purified polyclonal antibody supplied in PBS with 0.09 % (W/V) sodium azide.
Preservative:	Sodium azide
Precaution of Use:	This product contains Sodium azide: a POISONOUS AND HAZARDOUS SUBSTANCE which should be handled by trained staff only.
Storage:	4 °C,-20 °C
Expiry Date:	6 months

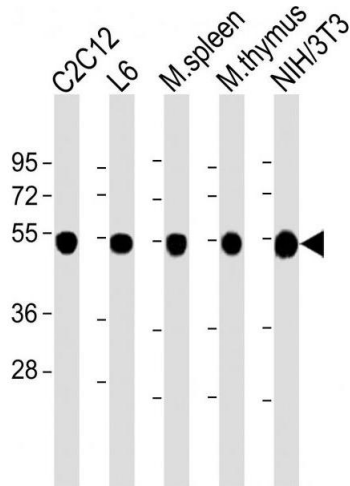
Images



Flow Cytometry

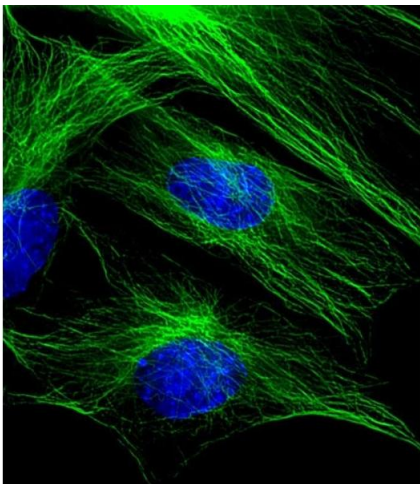
Image 1. Overlay histogram showing NIH/3T3 cells stained with (ABIN6242659 and ABIN6578660) (green line). The cells were fixed with 2 % paraformaldehyde (10 min) and then permeabilized with 90 % methanol for 10 min. The cells were then incubated in 2 % bovine serum albumin to block non-specific protein-protein interactions followed by the antibody ((ABIN6242659 and ABIN6578660), 1:25 dilution) for 60 min at 37 °C. The secondary antibody used was Goat-Anti-Rabbit IgG, DyLight® 488 Conjugated Highly Cross-

Adsorbed(OH191631) at 1/200 dilution for 40 min at 37 °C. Isotype control antibody (blue line) was rabbit IgG (1 μg/1x10⁶ cells) used under the same conditions. Acquisition of >10,000 events was performed.



Western Blotting

Image 2. All lanes : Anti-beta Tubulin at 1:2000 dilution Lane 1: C2C12 whole cell lysate Lane 2: L6 whole cell lysate Lane 3: mouse spleen lysate Lane 4: mouse thymus lysate Lane 5: NIH/3T3 whole cell lysate Lysates/proteins at 20 μg per lane. Secondary Goat Anti-Rabbit IgG, (H+L), Peroxidase conjugated at 1/10000 dilution. Predicted band size : 50 kDa Blocking/Dilution buffer: 5 % NFDM/TBST.



Immunofluorescence

Image 3. Immunofluorescent analysis of 4 % paraformaldehyde-fixed, 0.1 % Triton X-100 permeabilized C2C12 (mouse myoblast cell line) cells labeling beta Tubulin with (ABIN6242659 and ABIN6578660) at 1/25 dilution, followed by Dylight® 488-conjugated goat anti-rabbit IgG (NK179883) secondary antibody at 1/200 dilution (green). Immunofluorescence image showing cytoplasm staining on C2C12 cell line. The nuclear counter stain is DI (blue).