

Datasheet for ABIN6242661
anti-TUBB antibody (AA 298-328)



[Go to Product page](#)

3 Images

Overview

Quantity:	200 µL
Target:	TUBB
Binding Specificity:	AA 298-328
Reactivity:	Mouse
Host:	Rabbit
Clonality:	Polyclonal
Conjugate:	This TUBB antibody is un-conjugated
Application:	Western Blotting (WB), Flow Cytometry (FACS)

Product Details

Immunogen:	This beta Tubulin antibody is generated from a rabbit immunized with a KLH conjugated synthetic peptide between 298-328 amino acids from the mouse region of mouse beta Tubulin.
Clone:	RB57742
Isotype:	Ig Fraction
Predicted Reactivity:	E, C, D, H, Pr, Rat, B, X, Ha, Pig
Purification:	This antibody is purified through a protein A column, followed by peptide affinity purification.

Target Details

Target:	TUBB
Alternative Name:	beta Tubulin (TUBB Products)

Target Details

Background:	Tubulin is the major constituent of microtubules. It binds two moles of GTP, one at an exchangeable site on the beta chain and one at a non-exchangeable site on the alpha chain.
Molecular Weight:	49671
UniProt:	P99024
Pathways:	Microtubule Dynamics, M Phase

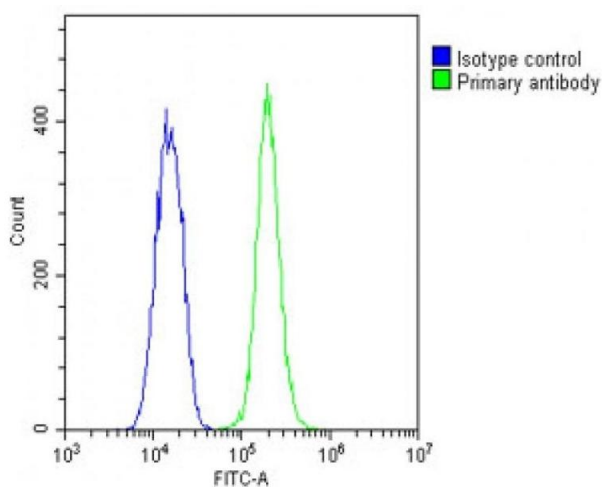
Application Details

Application Notes:	WB: 1:2000. WB: 1:2000. FC: 1:25
Restrictions:	For Research Use only

Handling

Format:	Liquid
Buffer:	Purified polyclonal antibody supplied in PBS with 0.09 % (W/V) sodium azide.
Preservative:	Sodium azide
Precaution of Use:	This product contains Sodium azide: a POISONOUS AND HAZARDOUS SUBSTANCE which should be handled by trained staff only.
Storage:	4 °C, -20 °C
Expiry Date:	6 months

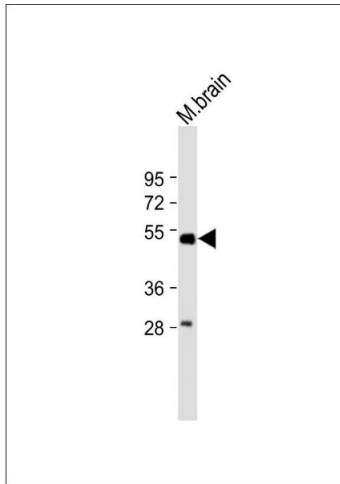
Images



Flow Cytometry

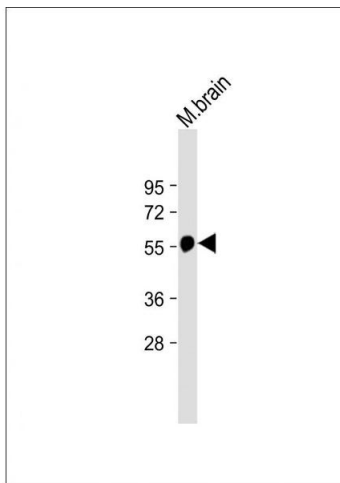
Image 1. Overlay histogram showing C2C12 cells stained with (ABIN6242661 and ABIN6578874)(green line). The cells were fixed with 2 % paraformaldehyde and then permeabilized with 90 % methanol for 10 min. The cells were then incubated in 2 % bovine serum albumin to block non-specific protein-protein interactions followed by the antibody (1:25 dilution) for 60 min at 37 °C. The secondary antibody used was Goat-Anti-Rabbit IgG, DyLight® 488 Conjugated Highly Cross-Adsorbed at 1/200 dilution for

40 min at Room temperature. Isotype control antibody (blue line) was rabbit IgG1 (1 µg/1x10⁶ cells) used under the same conditions. Acquisition of >10, 000 events was performed.



Western Blotting

Image 2. Anti-beta Tubulin Antibody at 1:2000 dilution + Mouse brain lysate Lysates/proteins at 20 µg per lane. Secondary Goat Anti-Rabbit IgG, (H+L), Peroxidase conjugated at 1/10000 dilution. Predicted band size : 50 kDa Blocking/Dilution buffer: 5 % NFDm/TBST.



Western Blotting

Image 3. Anti-beta Tubulin Antibody at 1:2000 dilution + Mouse brain lysate Lysates/proteins at 20 µg per lane. Secondary Goat Anti-Rabbit IgG, (H+L), Peroxidase conjugated at 1/10000 dilution. Predicted band size : 50 kDa Blocking/Dilution buffer: 5 % NFDm/TBST.