



[Go to Product page](#)

Datasheet for ABIN6242674
anti-TFCP2 antibody (AA 282-316)

1 Image

Overview

Quantity:	200 µL
Target:	TFCP2
Binding Specificity:	AA 282-316
Reactivity:	Mouse
Host:	Rabbit
Clonality:	Polyclonal
Conjugate:	This TFCP2 antibody is un-conjugated
Application:	Western Blotting (WB)

Product Details

Immunogen:	This TFCP2 antibody is generated from a rabbit immunized with a KLH conjugated synthetic peptide between 282-316 amino acids from the Central region of human TFCP2.
Clone:	RB53253
Isotype:	Ig Fraction
Purification:	This antibody is purified through a protein A column, followed by peptide affinity purification.

Target Details

Target:	TFCP2
Alternative Name:	TFCP2 (TFCP2 Products)
Background:	Binds a variety of cellular and viral promoters including fibrinogen, alpha-globin, SV40 and HIV-1

Target Details

promoters. Activation of the alpha-globin promoter in erythroid cells is via synergistic interaction with UBP1 (By similarity). Functions as part of the SSP (stage selector protein) complex. Facilitates the interaction of the gamma-globin genes with enhancer elements contained in the locus control region in fetal erythroid cells. Interacts by binding to the stage selector element (SSE) in the proximal gamma-globin promoter.

Molecular Weight: 57256

UniProt: [Q12800](#)

Application Details

Application Notes: WB: 1:2000

Restrictions: For Research Use only

Handling

Format: Liquid

Buffer: Purified polyclonal antibody supplied in PBS with 0.09 % (W/V) sodium azide.

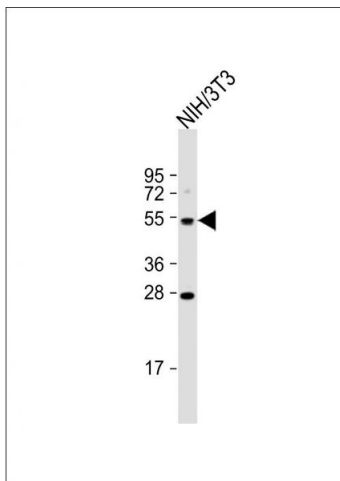
Preservative: Sodium azide

Precaution of Use: This product contains Sodium azide: a POISONOUS AND HAZARDOUS SUBSTANCE which should be handled by trained staff only.

Storage: 4 °C,-20 °C

Expiry Date: 6 months

Images



Western Blotting

Image 1. Anti-TFCP2 Antibody (Center) at 1:2000 dilution + NIH/3T3 whole cell lysate Lysates/proteins at 20 µg per lane. Secondary Goat Anti-Rabbit IgG, (H+L), Peroxidase conjugated at 1/10000 dilution. Predicted band size : 57 kDa
Blocking/Dilution buffer: 5 % NFDM/TBST.