

Datasheet for ABIN6242683
anti-UTF1 antibody (AA 191-224)[Go to Product page](#)

1 Image

Overview

Quantity:	400 µL
Target:	UTF1
Binding Specificity:	AA 191-224
Reactivity:	Human
Host:	Rabbit
Clonality:	Polyclonal
Conjugate:	This UTF1 antibody is un-conjugated
Application:	Western Blotting (WB)

Product Details

Immunogen:	This UTF1 antibody is generated from a rabbit immunized with a KLH conjugated synthetic peptide between 191-224 amino acids from the Central region of human UTF1.
Clone:	RB51420
Isotype:	Ig Fraction
Purification:	This antibody is purified through a protein A column, followed by peptide affinity purification.

Target Details

Target:	UTF1
Alternative Name:	UTF1 (UTF1 Products)
Background:	Acts as a transcriptional coactivator of ATF2.

Target Details

Molecular Weight: 36439

UniProt: [Q5T230](#)

Application Details

Application Notes: WB: 1:1000

Restrictions: For Research Use only

Handling

Format: Liquid

Buffer: Purified polyclonal antibody supplied in PBS with 0.09 % (W/V) sodium azide.

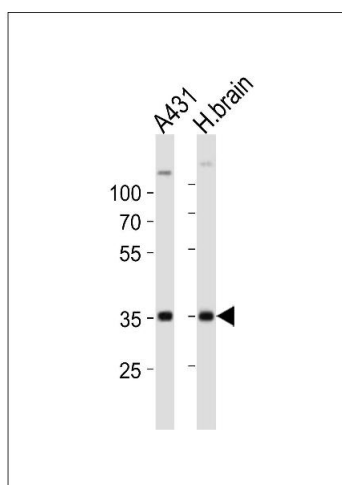
Preservative: Sodium azide

Precaution of Use: This product contains Sodium azide: a POISONOUS AND HAZARDOUS SUBSTANCE which should be handled by trained staff only.

Storage: 4 °C, -20 °C

Expiry Date: 6 months

Images



Western Blotting

Image 1. Western blot analysis of lysates from A431 cell line, human brain tissue lysate (from left to right), using UTF1 Antibody (Center) (ABIN6242683 and ABIN6577810). (ABIN6242683 and ABIN6577810) was diluted at 1:1000 at each lane. A goat anti-rabbit IgG H&L(HRP) at 1:10000 dilution was used as the secondary antibody. Lysates at 20 µg per lane.