

Datasheet for ABIN6242685

**anti-Ubiquitin B antibody (N-Term)**[Go to Product page](#)**1** Image

## Overview

Quantity:	400 µL
Target:	Ubiquitin B (UBB)
Binding Specificity:	AA 25-57, N-Term
Reactivity:	Human, Mouse, Rat
Host:	Rabbit
Clonality:	Polyclonal
Conjugate:	This Ubiquitin B antibody is un-conjugated
Application:	Western Blotting (WB)

## Product Details

Immunogen:	This UBB(Ubiquitin) antibody is generated from a rabbit immunized with a KLH conjugated synthetic peptide between 25-57 amino acids from the N-terminal region of human UBB(Ubiquitin).
Clone:	RB49507
Isotype:	Ig Fraction
Predicted Reactivity:	B, E, D, Pr, Pig, Sh, C, Hs, Ha, X, Rb
Purification:	This antibody is purified through a protein A column, followed by peptide affinity purification.

## Target Details

Target:	Ubiquitin B (UBB)
---------	-------------------

## Target Details

Alternative Name:	UBB(Ubiquitin) ( <a href="#">UBB Products</a> )
Background:	Ubiquitin exists either covalently attached to another protein, or free (unanchored). When covalently bound, it is conjugated to target proteins via an isopeptide bond either as a monomer (monoubiquitin), a polymer linked via different Lys residues of the ubiquitin (polyubiquitin chains) or a linear polymer linked via the initiator Met of the ubiquitin (linear polyubiquitin chains). Polyubiquitin chains, when attached to a target protein, have different functions depending on the Lys residue of the ubiquitin that is linked: Lys-6-linked may be involved in DNA repair, Lys-11-linked is involved in ERAD (endoplasmic reticulum-associated degradation) and in cell-cycle regulation, Lys-29-linked is involved in lysosomal degradation, Lys-33-linked is involved in kinase modification, Lys-48-linked is involved in protein degradation via the proteasome, Lys-63-linked is involved in endocytosis, DNA-damage responses as well as in signaling processes leading to activation of the transcription factor NF-kappa-B. Linear polymer chains formed via attachment by the initiator Met lead to cell signaling. Ubiquitin is usually conjugated to Lys residues of target proteins, however, in rare cases, conjugation to Cys or Ser residues has been observed. When polyubiquitin is free (unanchored-polyubiquitin), it also has distinct roles, such as in activation of protein kinases, and in signaling.
Molecular Weight:	25762
UniProt:	<a href="#">P0CG47</a>
Pathways:	<a href="#">Fc-epsilon Receptor Signaling Pathway</a> , <a href="#">EGFR Signaling Pathway</a> , <a href="#">Neurotrophin Signaling Pathway</a> , <a href="#">Activation of Innate immune Response</a> , <a href="#">Mitotic G1-G1/S Phases</a> , <a href="#">DNA Replication</a> , <a href="#">Toll-Like Receptors Cascades</a> , <a href="#">Synthesis of DNA</a> , <a href="#">Autophagy</a> , <a href="#">EGFR Downregulation</a> , <a href="#">Ubiquitin Proteasome Pathway</a>

## Application Details

Application Notes:	WB: 1:1000
Restrictions:	For Research Use only
Handling	
Format:	Liquid
Buffer:	Purified polyclonal antibody supplied in PBS with 0.09 % (W/V) sodium azide.
Preservative:	Sodium azide
Precaution of Use:	This product contains Sodium azide: a POISONOUS AND HAZARDOUS SUBSTANCE which

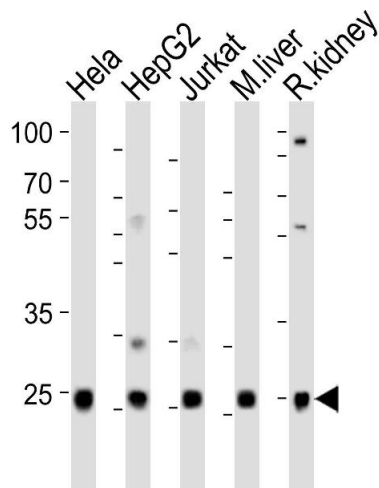
Handling

should be handled by trained staff only.

Storage: 4 °C,-20 °C

Expiry Date: 6 months

Images



Western Blotting

**Image 1.** Western blot analysis of lysates from Hela, HepG2, Jurkat cell line, mouse liver, rat kidney tissue(from left to right), using UBB(Ubiquitin) Antibody (N-term) (ABIN6242685 and ABIN6577623). (ABIN6242685 and ABIN6577623) was diluted at 1:1000 at each lane. A goat anti-rabbit IgG H&L(HRP) at 1:10000 dilution was used as the secondary antibody. Lysates at 20 µg per lane.