



[Go to Product page](#)

Datasheet for ABIN6242698  
**anti-WDR5 antibody (C-Term)**

1 Image

Overview

Quantity:	400 µL
Target:	WDR5
Binding Specificity:	AA 321-354, C-Term
Reactivity:	Human, Mouse
Host:	Rabbit
Clonality:	Polyclonal
Conjugate:	This WDR5 antibody is un-conjugated
Application:	Western Blotting (WB)

Product Details

Immunogen:	This WDR5 antibody is generated from a rabbit immunized with a KLH conjugated synthetic peptide between 321-354 amino acids from the C-terminal region of human WDR5.
Clone:	RB51448
Isotype:	Ig Fraction
Predicted Reactivity:	B, Rat, D
Purification:	This antibody is purified through a protein A column, followed by peptide affinity purification.

Target Details

Target:	WDR5
Alternative Name:	WDR5 ( <a href="#">WDR5 Products</a> )

## Target Details

---

**Background:** Contributes to histone modification. May position the N- terminus of histone H3 for efficient trimethylation at 'Lys-4'. As part of the MLL1/MLL complex it is involved in methylation and dimethylation at 'Lys-4' of histone H3. H3 'Lys-4' methylation represents a specific tag for epigenetic transcriptional activation. As part of the NSL complex it may be involved in acetylation of nucleosomal histone H4 on several lysine residues. May regulate osteoblasts differentiation.

**Molecular Weight:** 36588

**UniProt:** [P61964](#)

## Application Details

---

**Application Notes:** WB: 1:1000

**Restrictions:** For Research Use only

## Handling

---

**Format:** Liquid

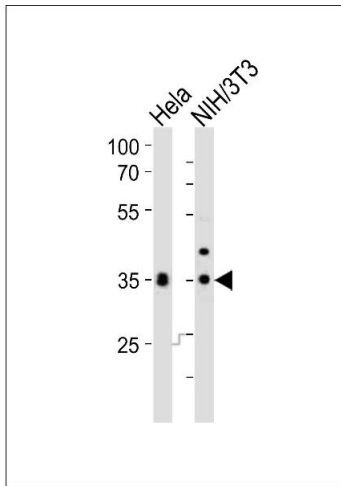
**Buffer:** Purified polyclonal antibody supplied in PBS with 0.09 % (W/V) sodium azide.

**Preservative:** Sodium azide

**Precaution of Use:** This product contains Sodium azide: a POISONOUS AND HAZARDOUS SUBSTANCE which should be handled by trained staff only.

**Storage:** 4 °C,-20 °C

**Expiry Date:** 6 months



### Western Blotting

**Image 1.** Western blot analysis of lysates from HeLa, mouse NIH/3T3 cell line (from left to right), using WDR5 Antibody (C-term) (ABIN6242698 and ABIN6577719). (ABIN6242698 and ABIN6577719) was diluted at 1:1000 at each lane. A goat anti-rabbit IgG H&L(HRP) at 1:10000 dilution was used as the secondary antibody. Lysates at 20  $\mu$ g per lane.