

Datasheet for ABIN6242700  
**anti-WBP1 antibody (AA 202-234)**[Go to Product page](#)

## 1 Image

## Overview

Quantity:	200 µL
Target:	WBP1
Binding Specificity:	AA 202-234
Reactivity:	Human
Host:	Rabbit
Clonality:	Polyclonal
Conjugate:	This WBP1 antibody is un-conjugated
Application:	Western Blotting (WB)

## Product Details

Immunogen:	This WBP1 antibody is generated from a rabbit immunized with a KLH conjugated synthetic peptide between 202-234 amino acids from human WBP1.
Clone:	RB54380
Isotype:	Ig Fraction
Purification:	This antibody is purified through a protein A column, followed by peptide affinity purification.

## Target Details

Target:	WBP1
Alternative Name:	WBP1 ( <a href="#">WBP1 Products</a> )
Molecular Weight:	29140

## Target Details

UniProt: [Q96G27](#)

## Application Details

Application Notes: WB: 1:2000-1:4000

Restrictions: For Research Use only

## Handling

Format: Liquid

Buffer: Purified polyclonal antibody supplied in PBS with 0.09 % (W/V) sodium azide.

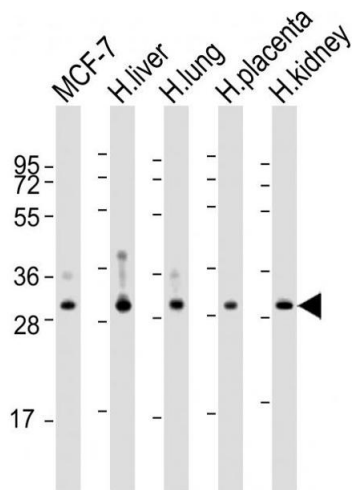
Preservative: Sodium azide

Precaution of Use: This product contains Sodium azide: a POISONOUS AND HAZARDOUS SUBSTANCE which should be handled by trained staff only.

Storage: 4 °C,-20 °C

Expiry Date: 6 months

## Images



### Western Blotting

**Image 1.** All lanes : Anti-WBP1 Antibody (C-Term) at 1:2000-1:4000 dilution Lane 1: MCF-7 whole cell lysate Lane 2: human liver lysate Lane 3: human lung lysate Lane 4: human placenta lysate Lane 5: human kidney lysate Lysates/proteins at 20 µg per lane. Secondary Goat Anti-Rabbit IgG, (H+L), Peroxidase conjugated at 1/10000 dilution. Predicted band size : 29 kDa Blocking/Dilution buffer: 5 % NFDM/TBST.