

Datasheet for ABIN6242719  
**anti-FATE1 antibody (AA 107-140)**[Go to Product page](#)

## 1 Image

## Overview

Quantity:	400 µL
Target:	FATE1
Binding Specificity:	AA 107-140
Reactivity:	Human
Host:	Rabbit
Clonality:	Polyclonal
Conjugate:	This FATE1 antibody is un-conjugated
Application:	Western Blotting (WB)

## Product Details

Immunogen:	This FATE1 antibody is generated from a rabbit immunized with a KLH conjugated synthetic peptide between 107-140 amino acids from the Central region of human FATE1.
Clone:	RB49594
Isotype:	Ig Fraction
Purification:	This antibody is purified through a protein A column, followed by peptide affinity purification.

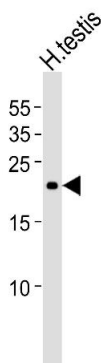
## Target Details

Target:	FATE1
Alternative Name:	FATE1 ( <a href="#">FATE1 Products</a> )
UniProt:	<a href="#">Q969F0</a>

## Application Details

Application Notes:	WB: 1:1000
Restrictions:	For Research Use only
Handling	
Format:	Liquid
Buffer:	Purified polyclonal antibody supplied in PBS with 0.09 % (W/V) sodium azide.
Preservative:	Sodium azide
Precaution of Use:	This product contains Sodium azide: a POISONOUS AND HAZARDOUS SUBSTANCE which should be handled by trained staff only.
Storage:	4 °C,-20 °C
Expiry Date:	6 months

## Images



### Western Blotting

**Image 1.** Western blot analysis of lysate from human testis tissue lysate, using FATE1 Antibody (Center) (ABIN6242719 and ABIN6577439). (ABIN6242719 and ABIN6577439) was diluted at 1:1000. A goat anti-rabbit IgG H&L(HRP) at 1:5000 dilution was used as the secondary antibody. Lysate at 35  $\mu$ g.