

Datasheet for ABIN6242722

**anti-Glycogenin 1 antibody (AA 314-347)**[Go to Product page](#)**2** Images

## Overview

Quantity:	200 µL
Target:	Glycogenin 1 (GYG1)
Binding Specificity:	AA 314-347
Reactivity:	Human, Rat, Mouse
Host:	Rabbit
Clonality:	Polyclonal
Conjugate:	This Glycogenin 1 antibody is un-conjugated
Application:	Western Blotting (WB), Flow Cytometry (FACS)

## Product Details

Immunogen:	This GYG1 antibody is generated from a rabbit immunized with a KLH conjugated synthetic peptide between 314-347 amino acids from human GYG1.
Clone:	RB55250
Isotype:	Ig Fraction
Predicted Reactivity:	M, Rat
Purification:	This antibody is purified through a protein A column, followed by peptide affinity purification.

## Target Details

Target:	Glycogenin 1 (GYG1)
Alternative Name:	GYG1 ( <a href="#">GYG1 Products</a> )

## Target Details

Background:	Self-glucosylates, via an inter-subunit mechanism, to form an oligosaccharide primer that serves as substrate for glycogen synthase.
Molecular Weight:	39384
UniProt:	<a href="#">P46976</a>
Pathways:	<a href="#">Cellular Glucan Metabolic Process</a>

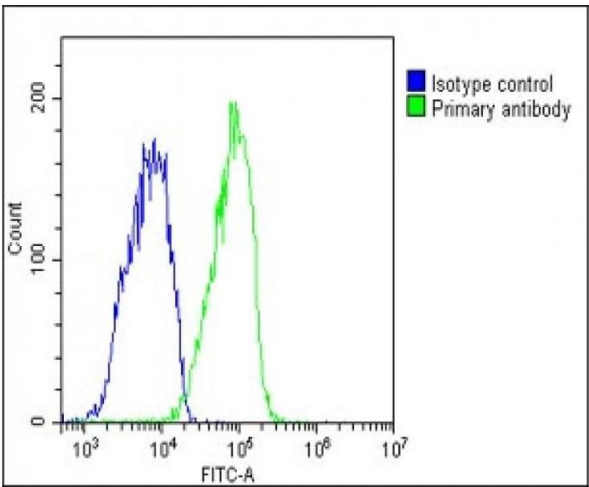
## Application Details

Application Notes:	WB: 1:2000. FC: 1:25
Restrictions:	For Research Use only

## Handling

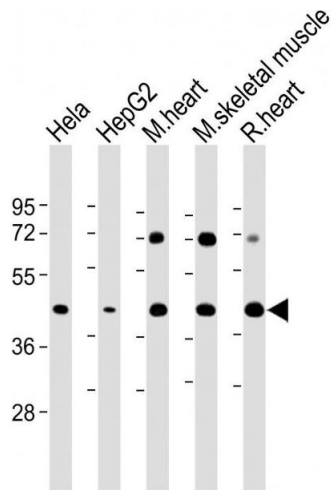
Format:	Liquid
Buffer:	Purified polyclonal antibody supplied in PBS with 0.09 % (W/V) sodium azide.
Preservative:	Sodium azide
Precaution of Use:	This product contains Sodium azide: a POISONOUS AND HAZARDOUS SUBSTANCE which should be handled by trained staff only.
Storage:	4 °C, -20 °C
Expiry Date:	6 months

## Images



### Flow Cytometry

**Image 1.** Overlay histogram showing HepG2 cells stained with (ABIN6242722 and ABIN6578815)(green line). The cells were fixed with 2 % paraformaldehyde (10 min) and then permeabilized with 90 % methanol for 10 min. The cells were then incubated in 2 % bovine serum albumin to block non-specific protein-protein interactions followed by the antibody ((ABIN6242722 and ABIN6578815), 1:25 dilution) for 60 min at 37 °C. The secondary antibody used was Goat-Anti-Rabbit IgG, DyLight® 488 Conjugated Highly Cross-



Adsorbed(1583138) at 1/200 dilution for 40 min at 37 °C. Isotype control antibody (blue line) was rabbit IgG1 (1 μg/1x10<sup>6</sup> cells) used under the same conditions. Acquisition of >10,000 events was performed.

Western Blotting

**Image 2.** All lanes : Anti-GYG1 Antibody (C-Term) at 1:2000 dilution Lane 1: HeLa whole cell lysate Lane 2: HepG2 whole cell lysate Lane 3: Mouse heart lysate Lane 4: Mouse skeletal muscle lysate Lane 5: Rat heart lysate Lysates/proteins at 20 μg per lane. Secondary Goat Anti-Rabbit IgG, (H+L), Peroxidase conjugated at 1/10000 dilution. Predicted band size : 39 kDa Blocking/Dilution buffer: 5 % NFDM/TBST.