

Datasheet for ABIN6242723
anti-CD42b antibody (AA 344-378)



[Go to Product page](#)

1 Image

Overview

Quantity:	400 µL
Target:	CD42b (GP1BA)
Binding Specificity:	AA 344-378
Reactivity:	Human
Host:	Rabbit
Clonality:	Polyclonal
Conjugate:	This CD42b antibody is un-conjugated
Application:	Western Blotting (WB)

Product Details

Immunogen:	This GP1BA(Glycocalicin) antibody is generated from a rabbit immunized with a KLH conjugated synthetic peptide between 344-378 amino acids from the Central region of human GP1BA(Glycocalicin).
Clone:	RB49575
Isotype:	Ig Fraction
Purification:	This antibody is purified through a protein A column, followed by peptide affinity purification.

Target Details

Target:	CD42b (GP1BA)
Alternative Name:	GP1BA(Glycocalicin) (GP1BA Products)

Target Details

Background:	GP-Ib, a surface membrane protein of platelets, participates in the formation of platelet plugs by binding to the A1 domain of vWF, which is already bound to the subendothelium.
Molecular Weight:	71540
UniProt:	P07359

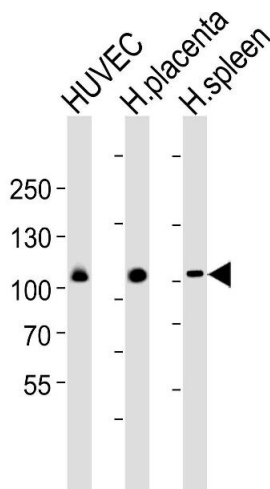
Application Details

Application Notes:	WB: 1:1000
Restrictions:	For Research Use only

Handling

Format:	Liquid
Buffer:	Purified polyclonal antibody supplied in PBS with 0.09 % (W/V) sodium azide.
Preservative:	Sodium azide
Precaution of Use:	This product contains Sodium azide: a POISONOUS AND HAZARDOUS SUBSTANCE which should be handled by trained staff only.
Storage:	4 °C,-20 °C
Expiry Date:	6 months

Images



Western Blotting

Image 1. Western blot analysis of lysates from HUVEC cell line, human placenta and spleen tissue lysate (from left to right), using GP1BA (Glycocalicin) Antibody (Center) (ABIN6242723 and ABIN6577497). (ABIN6242723 and ABIN6577497) was diluted at 1:1000 at each lane. A goat anti-rabbit IgG H&L (HRP) at 1:5000 dilution was used as the secondary antibody. Lysates at 35 µg per lane.