

Datasheet for ABIN6242731
anti-CXCL16 antibody (AA 150-183)[Go to Product page](#)

1 Image

Overview

Quantity:	400 µL
Target:	CXCL16
Binding Specificity:	AA 150-183
Reactivity:	Human
Host:	Rabbit
Clonality:	Polyclonal
Conjugate:	This CXCL16 antibody is un-conjugated
Application:	Western Blotting (WB)

Product Details

Immunogen:	This CXCL16 antibody is generated from a rabbit immunized with a KLH conjugated synthetic peptide between 150-183 amino acids from the Central region of human CXCL16.
Clone:	RB50788
Isotype:	Ig Fraction
Purification:	This antibody is purified through a protein A column, followed by peptide affinity purification.

Target Details

Target:	CXCL16
Alternative Name:	CXCL16 (CXCL16 Products)
Background:	Acts as a scavenger receptor on macrophages, which specifically binds to OxLDL (oxidized low

Target Details

density lipoprotein), suggesting that it may be involved in pathophysiology such as atherogenesis (By similarity). Induces a strong chemotactic response. Induces calcium mobilization. Binds to CXCR6/Bonzo.

Molecular Weight: 27579

UniProt: [Q9H2A7](#)

Application Details

Application Notes: WB: 1:500

Restrictions: For Research Use only

Handling

Format: Liquid

Buffer: Purified polyclonal antibody supplied in PBS with 0.09 % (W/V) sodium azide.

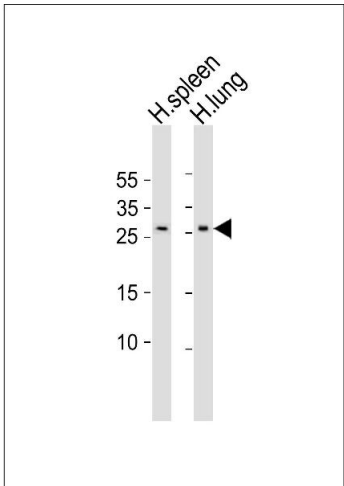
Preservative: Sodium azide

Precaution of Use: This product contains Sodium azide: a POISONOUS AND HAZARDOUS SUBSTANCE which should be handled by trained staff only.

Storage: 4 °C,-20 °C

Expiry Date: 6 months

Images



Western Blotting

Image 1. Western blot analysis of lysates from human spleen, human lung tissue lysate (from left to right), using CXCL16 Antibody (Center) (ABIN6242731 and ABIN6577759). (ABIN6242731 and ABIN6577759) was diluted at 1:500 at each lane. A goat anti-rabbit IgG H&L(HRP) at 1:10000 dilution was used as the secondary antibody. Lysates at 20 µg per lane.