

Datasheet for ABIN6242735
anti-PEPD antibody (AA 364-398)[Go to Product page](#)

1 Image

Overview

Quantity:	200 µL
Target:	PEPD
Binding Specificity:	AA 364-398
Reactivity:	Human
Host:	Rabbit
Clonality:	Polyclonal
Conjugate:	This PEPD antibody is un-conjugated
Application:	Western Blotting (WB)

Product Details

Immunogen:	This PEPD antibody is generated from a rabbit immunized with a KLH conjugated synthetic peptide between 364-398 amino acids from human PEPD.
Clone:	RB55146
Isotype:	Ig Fraction
Predicted Reactivity:	M, Rat
Purification:	This antibody is purified through a protein A column, followed by peptide affinity purification.

Target Details

Target:	PEPD
Alternative Name:	PEPD (PEPD Products)

Target Details

Background:	Splits dipeptides with a prolyl or hydroxyprolyl residue in the C-terminal position. Plays an important role in collagen metabolism because the high level of iminoacids in collagen.
Molecular Weight:	54548
UniProt:	P12955

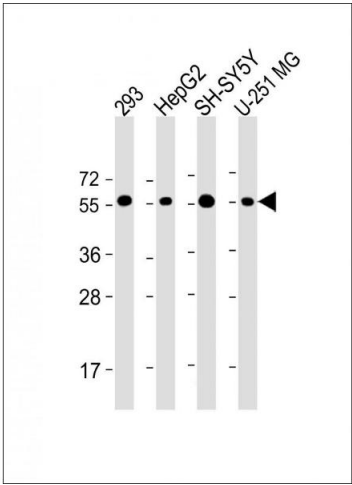
Application Details

Application Notes:	WB: 1:2000
Restrictions:	For Research Use only

Handling

Format:	Liquid
Buffer:	Purified polyclonal antibody supplied in PBS with 0.09 % (W/V) sodium azide.
Preservative:	Sodium azide
Precaution of Use:	This product contains Sodium azide: a POISONOUS AND HAZARDOUS SUBSTANCE which should be handled by trained staff only.
Storage:	4 °C,-20 °C
Expiry Date:	6 months

Images



Western Blotting

Image 1. All lanes : Anti-PEPD Antibody (C-Term) at 1:2000 dilution Lane 1: 293 whole cell lysate Lane 2: HepG2 whole cell lysate Lane 3: SH-SY5Y whole cell lysate Lane 4: U-251 MG whole cell lysate Lysates/proteins at 20 µg per lane. Secondary Goat Anti-Rabbit IgG, (H+L), Peroxidase conjugated at 1/10000 dilution. Predicted band size : 55 kDa Blocking/Dilution buffer: 5 % NFDm/TBST.