

Datasheet for ABIN6242747  
**anti-RPS7 antibody (AA 7-40)**[Go to Product page](#)

## 2 Images

## Overview

Quantity:	200 µL
Target:	RPS7
Binding Specificity:	AA 7-40
Reactivity:	Human, Mouse
Host:	Rabbit
Clonality:	Polyclonal
Conjugate:	This RPS7 antibody is un-conjugated
Application:	Western Blotting (WB), Flow Cytometry (FACS)

## Product Details

Immunogen:	This RPS7 antibody is generated from a rabbit immunized with a KLH conjugated synthetic peptide between 7-40 amino acids from human RPS7.
Clone:	RB55875
Isotype:	Ig Fraction
Predicted Reactivity:	B, Zf, Rat, X
Purification:	This antibody is purified through a protein A column, followed by peptide affinity purification.

## Target Details

Target:	RPS7
Alternative Name:	RPS7 ( <a href="#">RPS7 Products</a> )

## Target Details

Background:	Required for rRNA maturation.
Molecular Weight:	22127
UniProt:	<a href="#">P62081</a>
Pathways:	<a href="#">Tube Formation</a>

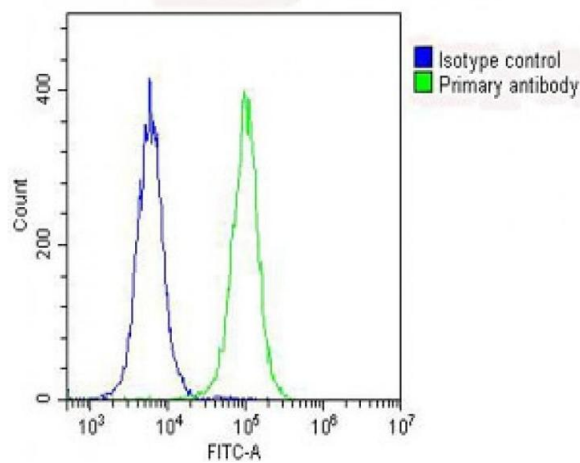
## Application Details

Application Notes:	WB: 1:2000. FC: 1:25
Restrictions:	For Research Use only

## Handling

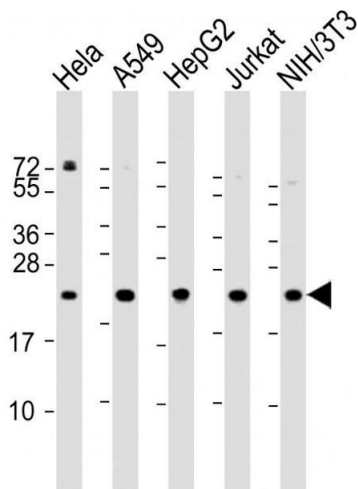
Format:	Liquid
Buffer:	Purified polyclonal antibody supplied in PBS with 0.09 % (W/V) sodium azide.
Preservative:	Sodium azide
Precaution of Use:	This product contains Sodium azide: a POISONOUS AND HAZARDOUS SUBSTANCE which should be handled by trained staff only.
Storage:	4 °C, -20 °C
Expiry Date:	6 months

## Images



### Flow Cytometry

**Image 1.** Overlay histogram showing HeLa cells stained with (ABIN6242747 and ABIN6578635) (green line). The cells were fixed with 2 % paraformaldehyde (10 min) and then permeabilized with 90 % methanol for 10 min. The cells were then incubated in 2 % bovine serum albumin to block non-specific protein-protein interactions followed by the antibody ((ABIN6242747 and ABIN6578635), 1:25 dilution) for 60 min at 37 °C. The secondary antibody used was Goat-Anti-Rabbit IgG, DyLight® 488 Conjugated Highly Cross-Adsorbed(OH191631) at 1/200 dilution for 40 min at 37 °C.



Isotype control antibody (blue line) was rabbit IgG (1  $\mu$ g/ $1 \times 10^6$  cells) used under the same conditions. Acquisition of >10,000 events was performed.

Western Blotting

**Image 2.** All lanes : Anti-RPS7 Antibody (N-Term) at 1:2000 dilution Lane 1: HeLa whole cell lysate Lane 2: A549 whole cell lysate Lane 3: HepG2 whole cell lysate Lane 4: Jurkat whole cell lysate Lane 5: NIH/3T3 whole cell lysate Lysates/proteins at 20  $\mu$ g per lane. Secondary Goat Anti-Rabbit IgG, (H+L), Peroxidase conjugated at 1/10000 dilution. Predicted band size : 22 kDa Blocking/Dilution buffer: 5 % NFDM/TBST.