



[Go to Product page](#)

Datasheet for ABIN6242749  
**anti-SNRPG antibody (N-Term)**

2 Images

Overview

Quantity:	400 µL
Target:	SNRPG
Binding Specificity:	AA 2-36, N-Term
Reactivity:	Human
Host:	Rabbit
Clonality:	Polyclonal
Conjugate:	This SNRPG antibody is un-conjugated
Application:	Western Blotting (WB), Immunofluorescence (IF)

Product Details

Immunogen:	This SNRPG antibody is generated from a rabbit immunized with a KLH conjugated synthetic peptide between 2-36 amino acids from the N-terminal region of human SNRPG.
Clone:	RB49820
Isotype:	Ig Fraction
Predicted Reactivity:	B, M
Purification:	This antibody is purified through a protein A column, followed by peptide affinity purification.

Target Details

Target:	SNRPG
Alternative Name:	SNRPG ( <a href="#">SNRPG Products</a> )

## Target Details

---

**Background:** Core component of the spliceosomal U1, U2, U4 and U5 small nuclear ribonucleoproteins (snRNPs), the building blocks of the spliceosome. Thereby, plays an important role in the splicing of cellular pre-mRNAs. Most spliceosomal snRNPs contain a common set of Sm proteins SNRPB, SNRPD1, SNRPD2, SNRPD3, SNRPE, SNRPF and SNRPG that assemble in an heptameric protein ring on the Sm site of the small nuclear RNA to form the core snRNP. Appears to function in the U7 snRNP complex that is involved in histone 3'- end processing.

**Molecular Weight:** 8496

**UniProt:** [P62308](#)

**Pathways:** [Ribonucleoprotein Complex Subunit Organization](#)

## Application Details

---

**Application Notes:** IF: 1:25. WB: 1:1000

**Restrictions:** For Research Use only

## Handling

---

**Format:** Liquid

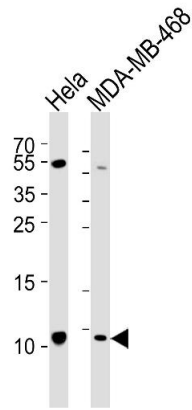
**Buffer:** Purified polyclonal antibody supplied in PBS with 0.09 % (W/V) sodium azide.

**Preservative:** Sodium azide

**Precaution of Use:** This product contains Sodium azide: a POISONOUS AND HAZARDOUS SUBSTANCE which should be handled by trained staff only.

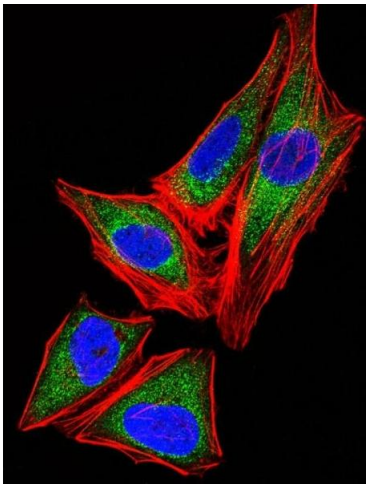
**Storage:** 4 °C,-20 °C

**Expiry Date:** 6 months



### Western Blotting

**Image 1.** Western blot analysis of lysates from HeLa, MDA-MB-468 cell line (from left to right), using SNRPG Antibody (N-term) (ABIN6242749 and ABIN6577533). (ABIN6242749 and ABIN6577533) was diluted at 1:1000 at each lane. A goat anti-rabbit IgG H&L(HRP) at 1:5000 dilution was used as the secondary antibody. Lysates at 35 µg per lane.



### Immunofluorescence

**Image 2.** Immunofluorescent analysis of 4 % paraformaldehyde-fixed, 0.1 % Triton X-100 permeabilized HeLa (Human Cervical epithelial adenocarcinoma cell line) cells labeling SNRPG with (ABIN6242749 and ABIN6577533) at 1/25 dilution, followed by Dylight® 488-conjugated goat anti-rabbit IgG (NK179883) secondary antibody at 1/200 dilution (green). Immunofluorescence image showing cytoplasm staining on HeLa cell line. Cytoplasmic actin is detected with Dylight® 554 Phalloidin (PD18466410) at 1/100 dilution (red). The nuclear counter stain is DI (blue).