

Datasheet for ABIN6242796
anti-CMA1 antibody (AA 84-118)[Go to Product page](#)

1 Image

Overview

Quantity:	200 µL
Target:	CMA1
Binding Specificity:	AA 84-118
Reactivity:	Human
Host:	Rabbit
Clonality:	Polyclonal
Conjugate:	This CMA1 antibody is un-conjugated
Application:	Western Blotting (WB)

Product Details

Immunogen:	This CMA1 antibody is generated from a rabbit immunized with a KLH conjugated synthetic peptide between 84-118 amino acids from human CMA1.
Clone:	RB53046
Isotype:	Ig Fraction
Purification:	This antibody is purified through a protein A column, followed by peptide affinity purification.

Target Details

Target:	CMA1
Alternative Name:	CMA1 (CMA1 Products)
Background:	Major secreted protease of mast cells with suspected roles in vasoactive peptide generation,

Target Details

	extracellular matrix degradation, and regulation of gland secretion.
Molecular Weight:	27325
UniProt:	P23946
Pathways:	ACE Inhibitor Pathway , Peptide Hormone Metabolism , Regulation of Systemic Arterial Blood Pressure by Hormones , Carbohydrate Homeostasis

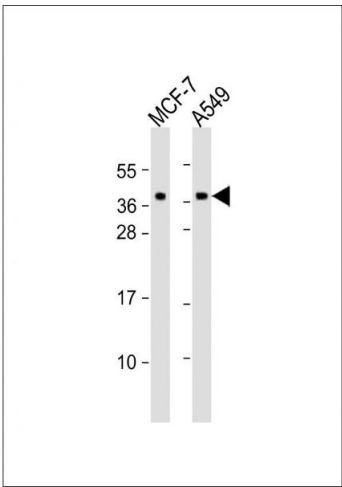
Application Details

Application Notes:	WB: 1:2000
Restrictions:	For Research Use only

Handling

Format:	Liquid
Buffer:	Purified polyclonal antibody supplied in PBS with 0.09 % (W/V) sodium azide.
Preservative:	Sodium azide
Precaution of Use:	This product contains Sodium azide: a POISONOUS AND HAZARDOUS SUBSTANCE which should be handled by trained staff only.
Storage:	4 °C, -20 °C
Expiry Date:	6 months

Images



Western Blotting

Image 1. All lanes : Anti-C Antibody (N-Term) at 1:2000 dilution Lane 1: MCF-7 whole cell lysates Lane 2: A549 whole cell lysates Lysates/proteins at 20 µg per lane. Secondary Goat Anti-Rabbit IgG, (H+L), Peroxidase conjugated at 1/10000 dilution. Predicted band size : 27 kDa Blocking/Dilution buffer: 5 % NFDM/TBST.