

Datasheet for ABIN6242800
anti-HES1 antibody (C-Term)



[Go to Product page](#)

1 Image

Overview

Quantity:	400 µL
Target:	HES1
Binding Specificity:	AA 205-239, C-Term
Reactivity:	Mouse
Host:	Rabbit
Clonality:	Polyclonal
Conjugate:	This HES1 antibody is un-conjugated
Application:	Western Blotting (WB)

Product Details

Immunogen:	This Mouse Hes1 antibody is generated from a rabbit immunized with a KLH conjugated synthetic peptide between 205-239 amino acids from the C-terminal region of Mouse Hes1.
Clone:	RB51068
Isotype:	Ig Fraction
Predicted Reactivity:	H, Rat
Purification:	This antibody is purified through a protein A column, followed by peptide affinity purification.

Target Details

Target:	HES1
Alternative Name:	Hes1 (HES1 Products)

Target Details

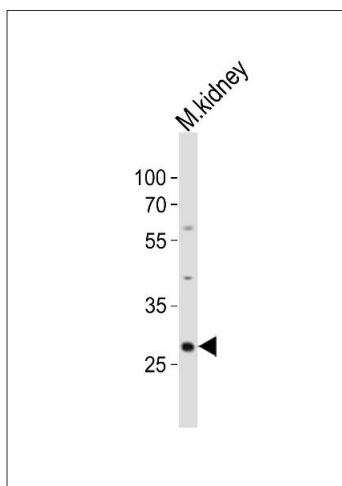
Background:	Transcriptional repressor of genes that require a bHLH protein for their transcription. May act as a negative regulator of myogenesis by inhibiting the functions of MYOD1 and ASH1 (By similarity). Binds DNA on N-box motifs: 5'-CACNAG-3' with high affinity and on E-box motifs: 5'-CANNTG-3' with low affinity. May play a role in a functional FA core complex response to DNA cross- link damage, being required for the stability and nuclear localization of FA core complex proteins, as well as for FANCD2 monoubiquitination in response to DNA damage (By similarity).
Molecular Weight:	29749
UniProt:	P35428
Pathways:	DNA Damage Repair

Application Details

Application Notes:	WB: 1:500
Restrictions:	For Research Use only

Handling

Format:	Liquid
Buffer:	Purified polyclonal antibody supplied in PBS with 0.09 % (W/V) sodium azide.
Preservative:	Sodium azide
Precaution of Use:	This product contains Sodium azide: a POISONOUS AND HAZARDOUS SUBSTANCE which should be handled by trained staff only.
Storage:	4 °C,-20 °C
Expiry Date:	6 months



Western Blotting

Image 1. Western blot analysis of lysate from mouse kidney tissue lysate, using Hes1 Antibody (C-term) (ABIN6242800 and ABIN6577787). (ABIN6242800 and ABIN6577787) was diluted at 1:500. A goat anti-rabbit IgG H&L(HRP) at 1:10000 dilution was used as the secondary antibody. Lysate at 20 µg.