



[Go to Product page](#)

Datasheet for ABIN6242809  
**anti-MLL3 antibody (N-Term)**

1 Image

Overview

Quantity:	200 µL
Target:	MLL3 (KMT2C)
Binding Specificity:	AA 1142-1175, N-Term
Reactivity:	Human
Host:	Rabbit
Clonality:	Polyclonal
Conjugate:	This MLL3 antibody is un-conjugated
Application:	Immunohistochemistry (Paraffin-embedded Sections) (IHC (p))

Product Details

Immunogen:	This MLL3 antibody is generated from a rabbit immunized with a KLH conjugated synthetic peptide between 1142-1175 amino acids from the N-terminal region of human MLL3.
Clone:	RB52487
Isotype:	Ig Fraction
Predicted Reactivity:	M
Purification:	This antibody is purified through a protein A column, followed by peptide affinity purification.

Target Details

Target:	MLL3 (KMT2C)
Alternative Name:	<a href="#">MLL3 (KMT2C Products)</a>

## Target Details

---

**Background:** Histone methyltransferase. Methylates 'Lys-4' of histone H3. H3 'Lys-4' methylation represents a specific tag for epigenetic transcriptional activation. Central component of the MLL2/3 complex, a coactivator complex of nuclear receptors, involved in transcriptional coactivation. KMT2C/MLL3 may be a catalytic subunit of this complex. May be involved in leukemogenesis and developmental disorder.

**Molecular Weight:** 541370

**UniProt:** [Q8NEZ4](#)

**Pathways:** [Warburg Effect](#)

## Application Details

---

**Application Notes:** IHC-P: 1:25

**Restrictions:** For Research Use only

## Handling

---

**Format:** Liquid

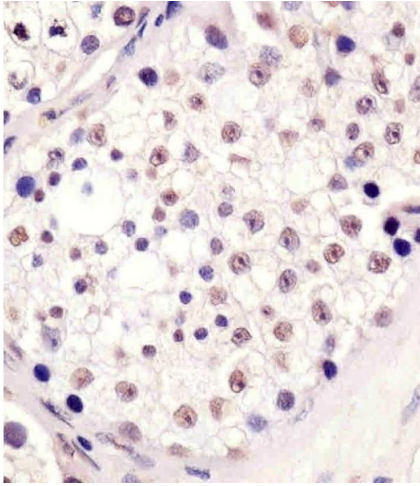
**Buffer:** Purified polyclonal antibody supplied in PBS with 0.09 % (W/V) sodium azide.

**Preservative:** Sodium azide

**Precaution of Use:** This product contains Sodium azide: a POISONOUS AND HAZARDOUS SUBSTANCE which should be handled by trained staff only.

**Storage:** 4 °C, -20 °C

**Expiry Date:** 6 months



#### Immunohistochemistry (Paraffin-embedded Sections)

**Image 1.** (ABIN6242809 and ABIN6578637) staining MLL3 in human testis tissue sections by Immunohistochemistry (IHC-P - paraformaldehyde-fixed, paraffin-embedded sections). Tissue was fixed with formaldehyde and blocked with 3 % BSA for 0.5 hour at room temperature, antigen retrieval was by heat mediation with a citrate buffer (pH 6). Samples were incubated with primary antibody (1/25) for 1 hour at 37 °C. A undiluted biotinylated goat polyvalent antibody was used as the secondary antibody.