



Datasheet for ABIN6242815
anti-PKM2 antibody (C-Term)



[Go to Product page](#)

4 Images

Overview

| | |
|----------------------|---|
| Quantity: | 400 µL |
| Target: | PKM2 |
| Binding Specificity: | AA 383-417, C-Term |
| Reactivity: | Human |
| Host: | Rabbit |
| Clonality: | Polyclonal |
| Conjugate: | This PKM2 antibody is un-conjugated |
| Application: | Western Blotting (WB), Immunohistochemistry (Paraffin-embedded Sections) (IHC (p)), Flow Cytometry (FACS) |

Product Details

| | |
|---------------|--|
| Immunogen: | This PKM2 antibody is generated from rabbits immunized with a KLH conjugated synthetic peptide between 383-417 amino acids from the C-terminal region of human PKM2. |
| Clone: | RB18405 |
| Isotype: | Ig Fraction |
| Purification: | This antibody is prepared by Saturated Ammonium Sulfate (SAS) precipitation followed by dialysis against PBS. |

Target Details

| | |
|-------------------|--|
| Target: | PKM2 |
| Alternative Name: | PKM2 (PKM2 Products) |

Target Details

Background: PKM2 is a pyruvate kinase that catalyzes the production of phosphoenolpyruvate from pyruvate and ATP. This protein has been shown to interact with thyroid hormone, and thus may mediate cellular metabolic effects induced by thyroid hormones. This protein has been found to bind Opa protein, a bacterial outer membrane protein involved in gonococcal adherence to and invasion of human cells, suggesting a role of this protein in bacterial pathogenesis.

Molecular Weight: 57937

NCBI Accession: [NP_001193725](#), [NP_001193726](#), [NP_001193727](#), [NP_001193728](#), [NP_002645](#), [NP_872270](#), [NP_872271](#)

UniProt: [P14618](#)

Pathways: [Warburg Effect](#)

Application Details

Application Notes: WB: 1:1000. WB: 1:1000. IHC-P: 1:50~100. FC: 1:10~50

Restrictions: For Research Use only

Handling

Format: Liquid

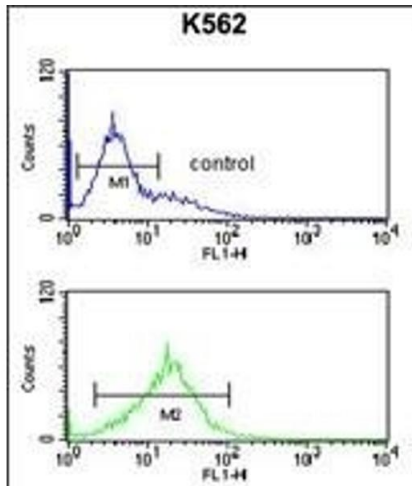
Buffer: Purified polyclonal antibody supplied in PBS with 0.09 % (W/V) sodium azide.

Preservative: Sodium azide

Precaution of Use: This product contains Sodium azide: a POISONOUS AND HAZARDOUS SUBSTANCE which should be handled by trained staff only.

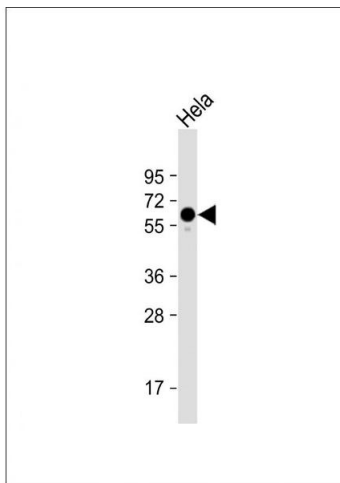
Storage: 4 °C, -20 °C

Expiry Date: 6 months



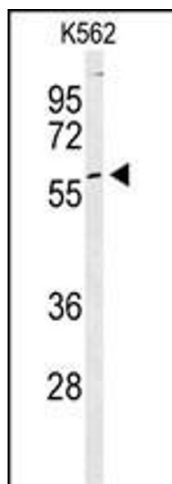
Flow Cytometry

Image 1. PKM2 Antibody (C-term) (ABIN6242815 and ABIN6578981) flow cytometric analysis of K562 cells (bottom histogram) compared to a negative control cell (top histogram). FITC-conjugated goat-anti-rabbit secondary antibodies were used for the analysis.



Western Blotting

Image 2. Anti-PKM2 Antibody (C-term) at 1:1000 dilution + HeLa whole cell lysate Lysates/proteins at 20 µg per lane. Secondary Goat Anti-Rabbit IgG, (H+L), Peroxidase conjugated at 1/10000 dilution. Predicted band size : 58 kDa Blocking/Dilution buffer: 5 % NFDN/TBST.



Western Blotting

Image 3. Western blot analysis of PKM2 Antibody (C-term) (ABIN6242815 and ABIN6578981) in K562 cell line lysates (35 µg/lane). PKM2 (arrow) was detected using the purified Pab.

Please check the [product details page](#) for more images. Overall 4 images are available for ABIN6242815.