



[Go to Product page](#)

Datasheet for ABIN6242822

anti-SLUG antibody (AA 98-129)

4 Images

3 Publications

Overview

Quantity:	400 µL
Target:	SLUG
Binding Specificity:	AA 98-129
Reactivity:	Human, Rat, Mouse
Host:	Rabbit
Clonality:	Polyclonal
Conjugate:	This SLUG antibody is un-conjugated
Application:	Western Blotting (WB), Immunofluorescence (IF), Immunohistochemistry (Paraffin-embedded Sections) (IHC (p))

Product Details

Immunogen:	This SLUG antibody is generated from rabbits immunized with a KLH conjugated synthetic peptide between 98-129 amino acids from the Central region of human SLUG.
Clone:	RB01398
Isotype:	Ig Fraction
Predicted Reactivity:	B
Purification:	This antibody is purified through a protein A column, followed by peptide affinity purification.

Target Details

Target:	SLUG
---------	------

Target Details

Abstract: [SLUG Products](#)

Background: SLUG is a member of the Snail family of C2H2-type zinc finger transcription factors. The encoded protein acts as a transcriptional repressor that binds to E-box motifs and is also likely to repress E-cadherin transcription in breast carcinoma. This protein is involved in epithelial-mesenchymal transitions and has antiapoptotic activity. Mutations in this gene may be associated with sporadic cases of neural tube defects.

Molecular Weight: 29986

NCBI Accession: [NP_003059](#)

UniProt: [O43623](#)

Application Details

Application Notes: IF: 1:10~50. WB: 1:2000. WB: 1:1000. IHC-P: 1:10~50

Restrictions: For Research Use only

Handling

Format: Liquid

Buffer: Purified polyclonal antibody supplied in PBS with 0.09 % (W/V) sodium azide.

Preservative: Sodium azide

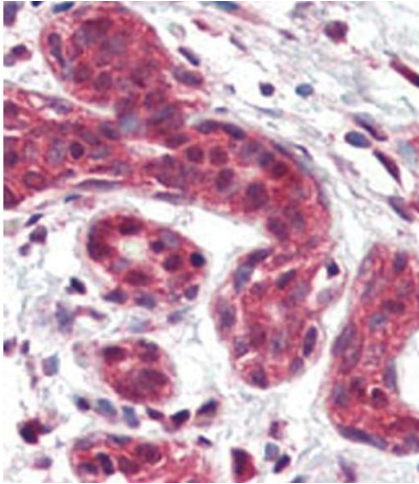
Precaution of Use: This product contains Sodium azide: a POISONOUS AND HAZARDOUS SUBSTANCE which should be handled by trained staff only.

Storage: 4 °C,-20 °C

Expiry Date: 6 months

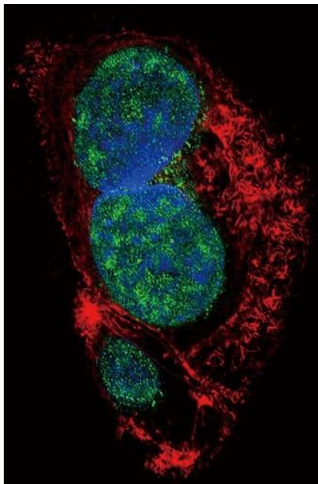
Publications

Product cited in: Hu, Guan, Liu, Dai, Tang, Xiao, Qian, Sharrow, Ye, Wu, Xu: "Endoglin Is Essential for the Maintenance of Self-Renewal and Chemoresistance in Renal Cancer Stem Cells." in: **Stem cell reports**, Vol. 9, Issue 2, pp. 464-477, (2018) ([PubMed](#)).



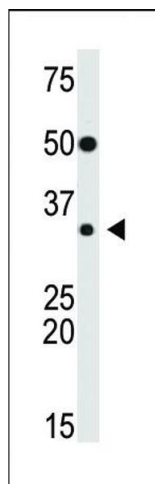
Immunohistochemistry (Paraffin-embedded Sections)

Image 1. Formalin-fixed and paraffin-embedded human Breast tissue reacted with SLUG Antibody (Center) (ABIN6242822 and ABIN6577392), which was peroxidase-conjugated to the secondary antibody, followed by AEC staining. This data demonstrates the use of this antibody for immunohistochemistry, clinical relevance has not been evaluated.



Immunofluorescence

Image 2. Confocal immunofluorescent analysis of SLUG Antibody (Center) (ABIN6242822 and ABIN6577392) with HepG2 cell followed by Alexa Fluor 488-conjugated goat anti-rabbit IgG (green). Actin filaments have been labeled with Alexa Fluor 555 phalloidin (red). DAPI was used to stain the cell nuclear (blue).



Western Blotting

Image 3. SLUG Antibody (Center) (ABIN6242822 and ABIN6577392) is used in Western blot to detect SLUG in mouse heart tissue lysate.

Please check the [product details page](#) for more images. Overall 4 images are available for ABIN6242822.