

Datasheet for ABIN6242823
anti-SRF antibody (C-Term)[Go to Product page](#)

1 Image

Overview

Quantity:	400 µL
Target:	SRF
Binding Specificity:	AA 489-524, C-Term
Reactivity:	Mouse, Rat
Host:	Rabbit
Clonality:	Polyclonal
Conjugate:	This SRF antibody is un-conjugated
Application:	Western Blotting (WB)

Product Details

Immunogen:	This (Mouse) Srf antibody is generated from a rabbit immunized with a KLH conjugated synthetic peptide between 489-524 amino acids from the C-terminal region of human (Mouse) Srf.
Clone:	RB51155
Isotype:	Ig Fraction
Purification:	This antibody is purified through a protein A column, followed by peptide affinity purification.

Target Details

Target:	SRF
Alternative Name:	Srf (SRF Products)

Target Details

Background:	SRF is a transcription factor that binds to the serum response element (SRE), a short sequence of dyad symmetry located 300 bp to the 5' of the site of transcription initiation of some genes (such as FOS) (By similarity). Required for cardiac differentiation and maturation.
Molecular Weight:	51247
UniProt:	Q9JM73

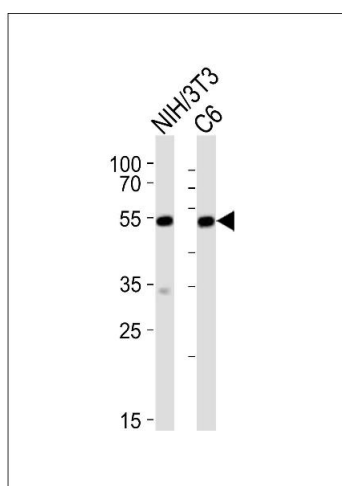
Application Details

Application Notes:	WB: 1:1000
Restrictions:	For Research Use only

Handling

Format:	Liquid
Buffer:	Purified polyclonal antibody supplied in PBS with 0.09 % (W/V) sodium azide.
Preservative:	Sodium azide
Precaution of Use:	This product contains Sodium azide: a POISONOUS AND HAZARDOUS SUBSTANCE which should be handled by trained staff only.
Storage:	4 °C, -20 °C
Expiry Date:	6 months

Images



Western Blotting

Image 1. Western blot analysis of lysates from mouse NIH/3T3, rat C6 cell line (from left to right), using Srf Antibody (C-term) (ABIN6242823 and ABIN6577636). (ABIN6242823 and ABIN6577636) was diluted at 1:1000 at each lane. A goat anti-rabbit IgG H&L(HRP) at 1:10000 dilution was used as the secondary antibody. Lysates at 20 µg per lane.