

Datasheet for ABIN6242829

**anti-Sonic Hedgehog antibody (C-Term)**[Go to Product page](#)**2** Images

## Overview

Quantity:	400 µL
Target:	Sonic Hedgehog (SHH)
Binding Specificity:	AA 397-431, C-Term
Reactivity:	Mouse
Host:	Rabbit
Clonality:	Polyclonal
Conjugate:	This Sonic Hedgehog antibody is un-conjugated
Application:	Western Blotting (WB), Flow Cytometry (FACS)

## Product Details

Immunogen:	This Mouse Shh antibody is generated from a rabbit immunized with a KLH conjugated synthetic peptide between 397-431 amino acids from the C-terminal region of mouse Shh.
Clone:	RB51214
Isotype:	Ig Fraction
Purification:	This antibody is purified through a protein A column, followed by peptide affinity purification.

## Target Details

Target:	Sonic Hedgehog (SHH)
Alternative Name:	Shh ( <a href="#">SHH Products</a> )
Background:	Binds to the patched (PTC) receptor, which functions in association with smoothed (SMO), to

## Target Details

---

activate the transcription of target genes. In the absence of SHH, PTC represses the constitutive signaling activity of SMO. Also regulates another target, the gli oncogene. Intercellular signal essential for a variety of patterning events during development: signal produced by the notochord that induces ventral cell fate in the neural tube and somites, and the polarizing signal for patterning of the anterior-posterior axis of the developing limb bud. Displays both floor plate- and motor neuron-inducing activity. The threshold concentration of N-product required for motor neuron induction is 5-fold lower than that required for floor plate induction (By similarity).

Molecular Weight:	47773
UniProt:	<a href="#">Q62226</a>
Pathways:	<a href="#">Hedgehog Signaling</a> , <a href="#">Dopaminergic Neurogenesis</a> , <a href="#">Regulation of Muscle Cell Differentiation</a> , <a href="#">Tube Formation</a> , <a href="#">Skeletal Muscle Fiber Development</a>

## Application Details

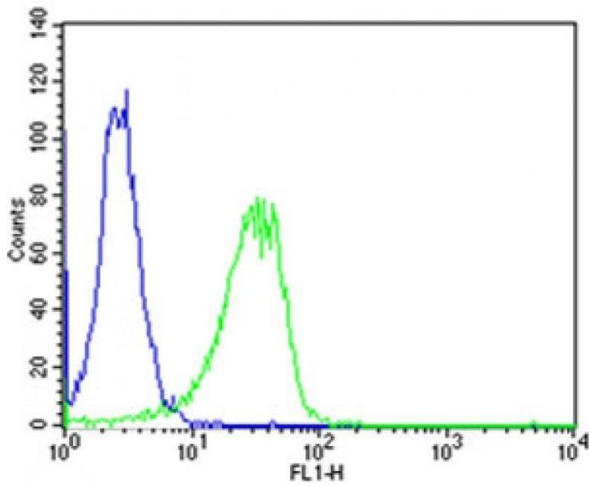
---

Application Notes:	WB: 1:1000. FC: 1:25
Restrictions:	For Research Use only

## Handling

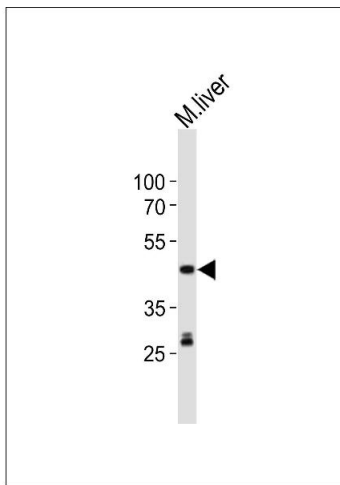
---

Format:	Liquid
Buffer:	Purified polyclonal antibody supplied in PBS with 0.09 % (W/V) sodium azide.
Preservative:	Sodium azide
Precaution of Use:	This product contains Sodium azide: a POISONOUS AND HAZARDOUS SUBSTANCE which should be handled by trained staff only.
Storage:	4 °C,-20 °C
Expiry Date:	6 months



### Flow Cytometry

**Image 1.** Flow cytometric analysis of HeLa cells using (Mouse) Shh Antibody (C-term)(green, Cat(ABIN6242829 and ABIN6577864)) compared to an isotype control of rabbit IgG(blue). (ABIN6242829 and ABIN6577864) was diluted at 1:25 dilution. An Alexa Fluor® 488 goat anti-rabbit IgG at 1:400 dilution was used as the secondary antibody.



### Western Blotting

**Image 2.** Western blot analysis of lysate from mouse liver tissue lysate, using Shh Antibody (C-term) (ABIN6242829 and ABIN6577864). (ABIN6242829 and ABIN6577864) was diluted at 1:1000. A goat anti-rabbit IgG H&L(HRP) at 1:10000 dilution was used as the secondary antibody. Lysate at 20 µg.