

Datasheet for ABIN6242834
anti-COL14A1 antibody (AA 643-677)[Go to Product page](#)

3 Images

Overview

Quantity:	200 µL
Target:	COL14A1
Binding Specificity:	AA 643-677
Reactivity:	Human
Host:	Rabbit
Clonality:	Polyclonal
Conjugate:	This COL14A1 antibody is un-conjugated
Application:	Western Blotting (WB), Immunohistochemistry (Paraffin-embedded Sections) (IHC (p)), Flow Cytometry (FACS)

Product Details

Immunogen:	This COL14A1 antibody is generated from a rabbit immunized with a KLH conjugated synthetic peptide between 643-677 amino acids from the Central region of human COL14A1.
Clone:	RB57775
Isotype:	Ig Fraction
Purification:	This antibody is purified through a protein A column, followed by peptide affinity purification.

Target Details

Target:	COL14A1
Alternative Name:	COL14A1 (COL14A1 Products)

Target Details

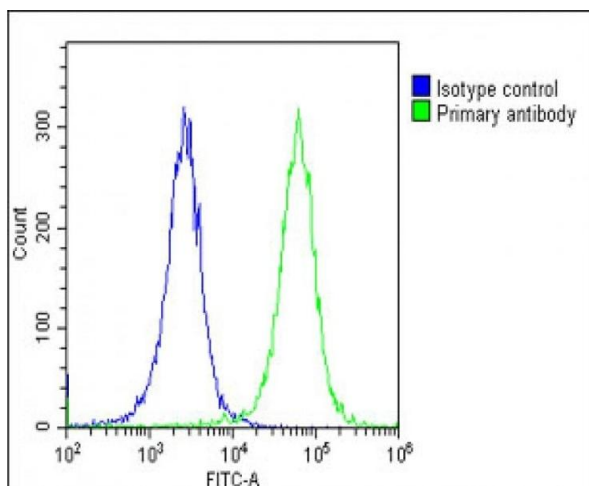
Background:	Plays an adhesive role by integrating collagen bundles. It is probably associated with the surface of interstitial collagen fibrils via COL1. The COL2 domain may then serve as a rigid arm which sticks out from the fibril and protrudes the large N-terminal globular domain into the extracellular space, where it might interact with other matrix molecules or cell surface receptors (By similarity).
Molecular Weight:	193515
UniProt:	Q05707
Pathways:	Regulation of Muscle Cell Differentiation

Application Details

Application Notes:	WB: 1:2000. IHC-P: 1:25. FC: 1:25
Restrictions:	For Research Use only

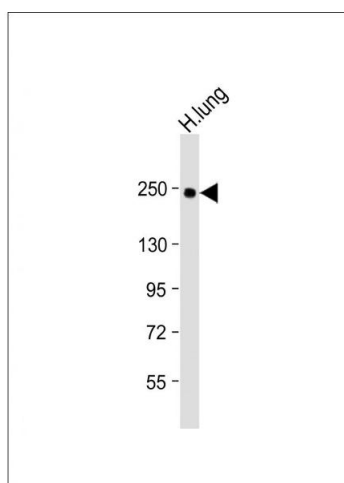
Handling

Format:	Liquid
Buffer:	Purified polyclonal antibody supplied in PBS with 0.09 % (W/V) sodium azide.
Preservative:	Sodium azide
Precaution of Use:	This product contains Sodium azide: a POISONOUS AND HAZARDOUS SUBSTANCE which should be handled by trained staff only.
Storage:	4 °C,-20 °C
Expiry Date:	6 months



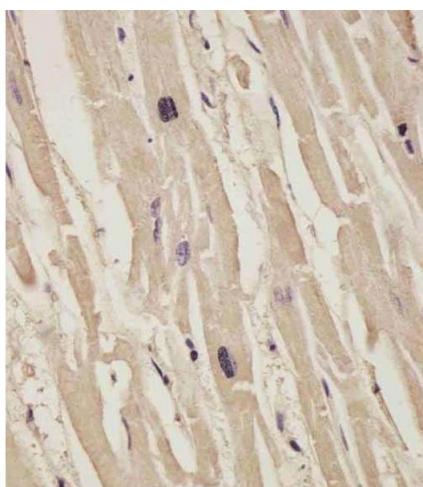
Flow Cytometry

Image 1. Overlay histogram showing Hela cells stained with (ABIN6242834 and ABIN6578871)(green line). The cells were fixed with 2 % paraformaldehyde (10 min) and then permeabilized with 90 % methanol for 10 min. The cells were then incubated in 2 % bovine serum albumin to block non-specific protein-protein interactions followed by the antibody ((ABIN6242834 and ABIN6578871), 1:25 dilution) for 60 min at 37 °C. The secondary antibody used was Goat Anti-Rabbit IgG, DyLight® 488 Conjugated Highly Cross-Adsorbed(OE188374) at 1/200 dilution for 40 min at 37 °C. Isotype control antibody (blue line) was rabbit IgG1 (1 µg/1x10⁶ cells) used under the same conditions. Acquisition of >10,000 events was performed.



Western Blotting

Image 2. Anti-COL14A1 Antibody (Center) at 1:2000 dilution + Human lung lysate Lysates/proteins at 20 µg per lane. Secondary Goat Anti-Rabbit IgG, (H+L), Peroxidase conjugated at 1/10000 dilution. Predicted band size : 194 kDa Blocking/Dilution buffer: 5 % NFDm/TBST.



Immunohistochemistry (Paraffin-embedded Sections)

Image 3. (ABIN6242834 and ABIN6578871) staining COL14A1 in human heart tissue sections by Immunohistochemistry (IHC-P - paraformaldehyde-fixed, paraffin-embedded sections). Tissue was fixed with formaldehyde and blocked with 3 % BSA for 0.5 hour at room temperature, antigen retrieval was by heat mediation with a citrate buffer (pH 6). Samples were incubated with primary antibody (1/25) for 1 hour at 37 °C. A undiluted biotinylated goat polyvalent antibody was used as the

secondary antibody.