

Datasheet for ABIN6242841
anti-CLEC16A antibody (C-Term)[Go to Product page](#)

1 Image

Overview

Quantity:	400 µL
Target:	CLEC16A
Binding Specificity:	AA 773-805, C-Term
Reactivity:	Human, Mouse
Host:	Rabbit
Clonality:	Polyclonal
Conjugate:	This CLEC16A antibody is un-conjugated
Application:	Western Blotting (WB)

Product Details

Immunogen:	This CLEC16A antibody is generated from a rabbit immunized with a KLH conjugated synthetic peptide between 773-805 amino acids from the C-terminal region of human CLEC16A.
Clone:	RB51799
Isotype:	Ig Fraction
Purification:	This antibody is purified through a protein A column, followed by peptide affinity purification.

Target Details

Target:	CLEC16A
Alternative Name:	CLEC16A (CLEC16A Products)
Background:	Regulator of mitophagy through the upstream regulation of the RNF41/NRDP1-PARK2

Target Details

pathway. Mitophagy is a selective form of autophagy necessary for mitochondrial quality control. The RNF41/NRDP1-PARK2 pathway regulates autophagosome-lysosome fusion during late mitophagy. May protect RNF41/NRDP1 from proteosomal degradation, RNF41/NRDP1 which regulates proteosomal degradation of PARK2. Plays a key role in beta cells functions by regulating mitophagy/autophagy and mitochondrial health.

Molecular Weight: 117715

UniProt: [Q2KHT3](#)

Application Details

Application Notes: WB: 1:1000

Restrictions: For Research Use only

Handling

Format: Liquid

Buffer: Purified polyclonal antibody supplied in PBS with 0.09 % (W/V) sodium azide.

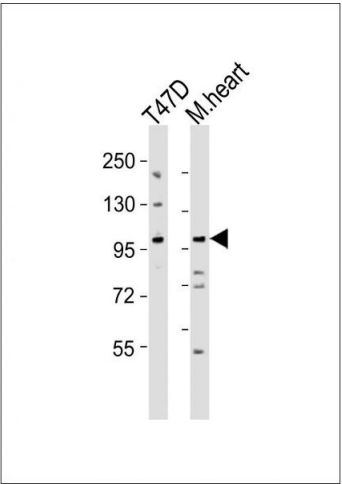
Preservative: Sodium azide

Precaution of Use: This product contains Sodium azide: a POISONOUS AND HAZARDOUS SUBSTANCE which should be handled by trained staff only.

Storage: 4 °C,-20 °C

Expiry Date: 6 months

Images



Western Blotting

Image 1. All lanes : Anti-CLEC16A Antibody (C-term) at 1:1000 dilution Lane 1: T47D whole cell lysates Lane 2: mouse heart lysates Lysates/proteins at 20 µg per lane. Secondary Goat Anti-Rabbit IgG, (H+L), Peroxidase conjugated at 1/10000 dilution Predicted band size : 118 kDa Blocking/Dilution buffer: 5 % NFDm/TBST.