

Datasheet for ABIN6242872
anti-SLC2A8 antibody (AA 260-292)

3 Images

[Go to Product page](#)

Overview

Quantity:	200 µL
Target:	SLC2A8
Binding Specificity:	AA 260-292
Reactivity:	Human, Mouse, Rat
Host:	Rabbit
Clonality:	Polyclonal
Conjugate:	This SLC2A8 antibody is un-conjugated
Application:	Western Blotting (WB), Immunohistochemistry (Paraffin-embedded Sections) (IHC (p)), Flow Cytometry (FACS)

Product Details

Immunogen:	This SLC2A8 antibody is generated from a rabbit immunized with a KLH conjugated synthetic peptide between 260-292 amino acids from the Central region of human SLC2A8.
Clone:	RB55905
Isotype:	Ig Fraction
Predicted Reactivity:	B
Purification:	This antibody is purified through a protein A column, followed by peptide affinity purification.

Target Details

Target:	SLC2A8
---------	--------

Target Details

Alternative Name:	SLC2A8 (SLC2A8 Products)
Background:	Insulin-regulated facilitative glucose transporter. Binds cytochalasin B in a glucose-inhibitable manner. Seems to be a dual-specific sugar transporter as it is inhibitable by fructose (By similarity).
Molecular Weight:	50819
UniProt:	Q9NY64

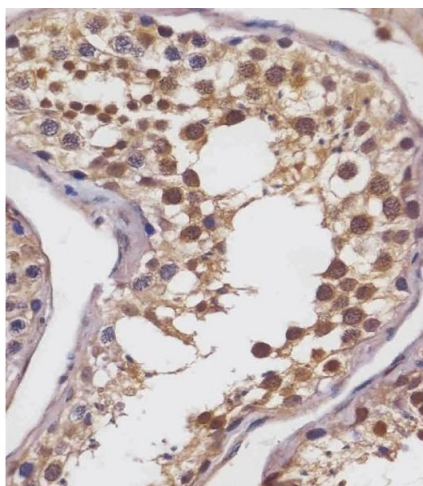
Application Details

Application Notes:	WB: 1:2000. IHC-P: 1:25. FC: 1:25
Restrictions:	For Research Use only

Handling

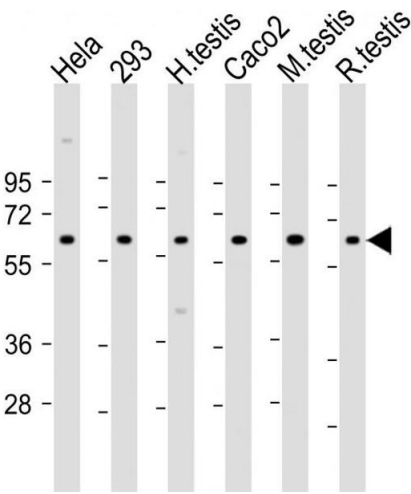
Format:	Liquid
Buffer:	Purified polyclonal antibody supplied in PBS with 0.09 % (W/V) sodium azide.
Preservative:	Sodium azide
Precaution of Use:	This product contains Sodium azide: a POISONOUS AND HAZARDOUS SUBSTANCE which should be handled by trained staff only.
Storage:	4 °C,-20 °C
Expiry Date:	6 months

Images



Immunohistochemistry (Paraffin-embedded Sections)

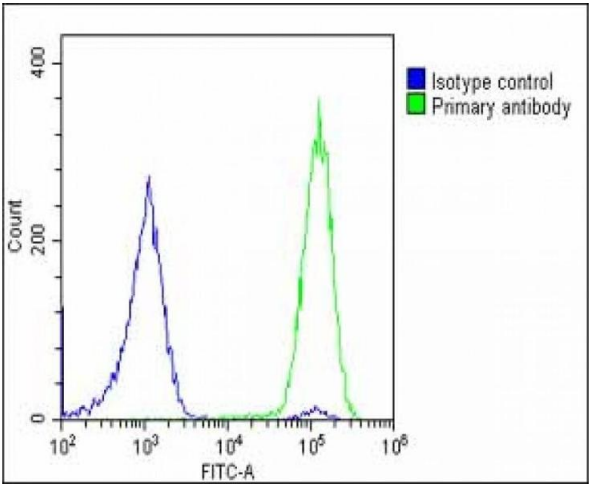
Image 1. (ABIN6242872 and ABIN6578693) staining SLC2A8 in human testis tissue sections by Immunohistochemistry (IHC-P - paraformaldehyde-fixed, paraffin-embedded sections). Tissue was fixed with formaldehyde and blocked with 3 % BSA for 0.5 hour at room temperature, antigen retrieval was by heat mediation with a citrate buffer (pH 6). Samples were incubated with primary antibody (1/25) for 1 hour at 37 °C. A undiluted



biotinylated goat polyvalent antibody was used as the secondary antibody.

Western Blotting

Image 2. All lanes : Anti-SLC2A8 Antibody (Center) at 1:2000 dilution Lane 1: HeLa whole cell lysate Lane 2: 293 whole cell lysate Lane 3: human testis lysate Lane 4: Caco2 whole cell lysate Lane 5: mouse testis lysate Lane 6: rat testis lysate Lysates/proteins at 20 µg per lane. Secondary Goat Anti-Rabbit IgG, (H+L), Peroxidase conjugated at 1/10000 dilution. Predicted band size : 51 kDa Blocking/Dilution buffer: 5 % NFDM/TBST.



Flow Cytometry

Image 3. Overlay histogram showing U-2 OS cells stained with (ABIN6242872 and ABIN6578693)(green line). The cells were fixed with 2 % paraformaldehyde (10 min) and then permeabilized with 90 % methanol for 10 min. The cells were then incubated in 2 % bovine serum albumin to block non-specific protein-protein interactions followed by the antibody ((ABIN6242872 and ABIN6578693), 1:25 dilution) for 60 min at 37 °C. The secondary antibody used was Goat Anti-Rabbit IgG, DyLight® 488 Conjugated Highly Cross-Adsorbed(OE188374) at 1/200 dilution for 40 min at 37 °C. Isotype control antibody (blue line) was rabbit IgG1 (1 µg/1x10⁶ cells) used under the same conditions. Acquisition of >10,000 events was performed.