

Datasheet for ABIN6242873
anti-GLUT1 antibody (C-Term)



[Go to Product page](#)

1 Image

Overview

Quantity:	80 µL
Target:	GLUT1 (SLC2A1)
Binding Specificity:	AA 464-497, C-Term
Reactivity:	Human
Host:	Rabbit
Clonality:	Polyclonal
Conjugate:	This GLUT1 antibody is un-conjugated
Application:	Western Blotting (WB)

Product Details

Immunogen:	This SLC2A1 antibody is generated from a rabbit immunized with a KLH conjugated synthetic peptide between 464-497 amino acids from the C-terminal region of human SLC2A1.
Clone:	RB52095
Isotype:	Ig Fraction
Purification:	This antibody is purified through a protein A column, followed by peptide affinity purification.

Target Details

Target:	GLUT1 (SLC2A1)
Alternative Name:	SLC2A1 (SLC2A1 Products)
Background:	Facilitative glucose transporter. This isoform may be responsible for constitutive or basal

Target Details

	glucose uptake. Has a very broad substrate specificity, can transport a wide range of aldoses including both pentoses and hexoses.
Molecular Weight:	54084
UniProt:	P11166
Pathways:	Sensory Perception of Sound , Dicarboxylic Acid Transport , Warburg Effect

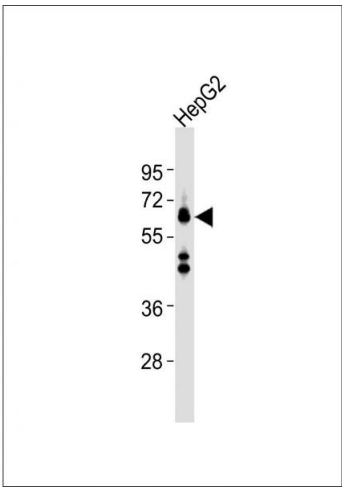
Application Details

Application Notes:	WB: 1:1000
Restrictions:	For Research Use only

Handling

Format:	Liquid
Buffer:	Purified polyclonal antibody supplied in PBS with 0.09 % (W/V) sodium azide.
Preservative:	Sodium azide
Precaution of Use:	This product contains Sodium azide: a POISONOUS AND HAZARDOUS SUBSTANCE which should be handled by trained staff only.
Storage:	4 °C, -20 °C
Expiry Date:	6 months

Images



Western Blotting

Image 1. Anti-SLC2A1 Antibody (C-term) at 1:1000 dilution + HepG2 whole cell lysates. Lysates/proteins at 20 µg per lane. Secondary Goat Anti-Rabbit IgG, (H+L), Peroxidase conjugated at 1/10000 dilution. Predicted band size : 54 kDa. Blocking/Dilution buffer: 5 % NFDM/TBST.