

Datasheet for ABIN6242874
anti-SLC2A3 antibody (AA 432-463)[Go to Product page](#)

2 Images

Overview

Quantity:	200 µL
Target:	SLC2A3
Binding Specificity:	AA 432-463
Reactivity:	Human, Mouse, Rat
Host:	Rabbit
Clonality:	Polyclonal
Conjugate:	This SLC2A3 antibody is un-conjugated
Application:	Western Blotting (WB), Flow Cytometry (FACS)

Product Details

Immunogen:	This SLC2A3 antibody is generated from a rabbit immunized with a KLH conjugated synthetic peptide between 432-463 amino acids from human SLC2A3.
Clone:	RB56266
Isotype:	Ig Fraction
Predicted Reactivity:	Rb
Purification:	This antibody is purified through a protein A column, followed by peptide affinity purification.

Target Details

Target:	SLC2A3
Alternative Name:	SLC2A3 (SLC2A3 Products)

Target Details

Background:	Facilitative glucose transporter. Probably a neuronal glucose transporter.
Molecular Weight:	53924
UniProt:	P11169
Pathways:	Warburg Effect

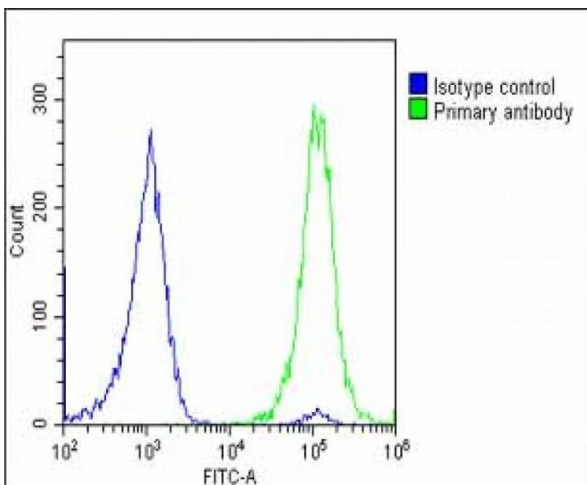
Application Details

Application Notes:	WB: 1:2000. FC: 1:25
Restrictions:	For Research Use only

Handling

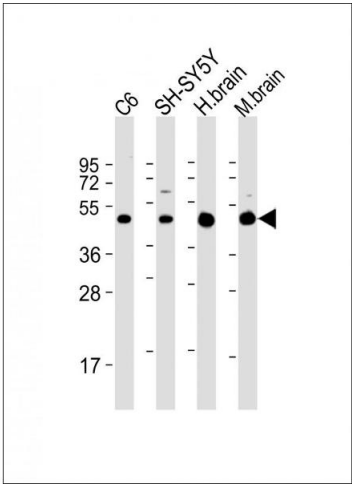
Format:	Liquid
Buffer:	Purified polyclonal antibody supplied in PBS with 0.09 % (W/V) sodium azide.
Preservative:	Sodium azide
Precaution of Use:	This product contains Sodium azide: a POISONOUS AND HAZARDOUS SUBSTANCE which should be handled by trained staff only.
Storage:	4 °C,-20 °C
Expiry Date:	6 months

Images



Flow Cytometry

Image 1. Overlay histogram showing U-2 OS cells stained with (ABIN6242874 and ABIN6578731)(green line). The cells were fixed with 2 % paraformaldehyde (10 min) and then permeabilized with 90 % methanol for 10 min. The cells were then incubated in 2 % bovine serum albumin to block non-specific protein-protein interactions followed by the antibody ((ABIN6242874 and ABIN6578731), 1:25 dilution) for 60 min at 37 °C. The secondary antibody used was Goat-Anti-Rabbit IgG, DyLight® 488 Conjugated Highly Cross-Adsorbed(OE188374) at 1/200 dilution for 40 min at 37 °C.



Isotype control antibody (blue line) was rabbit IgG1 (1 μ g/ 1×10^6 cells) used under the same conditions. Acquisition of $>10,000$ events was performed.

Western Blotting

Image 2. All lanes : Anti-SLC2A3 Antibody (C-Term) at 1:2000 dilution Lane 1: C6 whole cell lysate Lane 2: SH-SY5Y whole cell lysate Lane 3: human brain lysate Lane 4: mouse brain lysate Lysates/proteins at 20 μ g per lane. Secondary Goat Anti-Rabbit IgG, (H+L), Peroxidase conjugated at 1/10000 dilution. Predicted band size : 54 kDa Blocking/Dilution buffer: 5 % NFDM/TBST.