

Datasheet for ABIN6242875
anti-GLUT4 antibody (C-Term)



[Go to Product page](#)

1 Image

Overview

Quantity:	400 µL
Target:	GLUT4 (SLC2A4)
Binding Specificity:	AA 495-529, C-Term
Reactivity:	Human
Host:	Rabbit
Clonality:	Polyclonal
Conjugate:	This GLUT4 antibody is un-conjugated
Application:	Western Blotting (WB)

Product Details

Immunogen:	This SLC2A4 antibody is generated from a rabbit immunized with a KLH conjugated synthetic peptide between 495-529 amino acids from the C-terminal region of human SLC2A4.
Clone:	RB43833
Isotype:	Ig Fraction
Predicted Reactivity:	M, Rat
Purification:	This antibody is purified through a protein A column, followed by peptide affinity purification.

Target Details

Target:	GLUT4 (SLC2A4)
Alternative Name:	SLC2A4 (SLC2A4 Products)

Target Details

Background:	Insulin-regulated facilitative glucose transporter.
Molecular Weight:	54787
UniProt:	P14672
Pathways:	AMPK Signaling , Carbohydrate Homeostasis , Proton Transport , Brown Fat Cell Differentiation , Warburg Effect

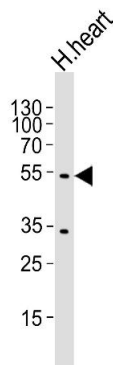
Application Details

Application Notes:	WB: 1:1000
Restrictions:	For Research Use only

Handling

Format:	Liquid
Buffer:	Purified polyclonal antibody supplied in PBS with 0.09 % (W/V) sodium azide.
Preservative:	Sodium azide
Precaution of Use:	This product contains Sodium azide: a POISONOUS AND HAZARDOUS SUBSTANCE which should be handled by trained staff only.
Storage:	4 °C, -20 °C
Expiry Date:	6 months

Images



Western Blotting

Image 1. Western blot analysis of lysate from human heart tissue, using SLC2A4 Antibody (C-term) (ABIN6242875 and ABIN6577565). (ABIN6242875 and ABIN6577565) was diluted at 1:1000. A goat anti-rabbit IgG H&L(HRP) at 1:5000 dilution was used as the secondary antibody. Lysate at 35 μ g.